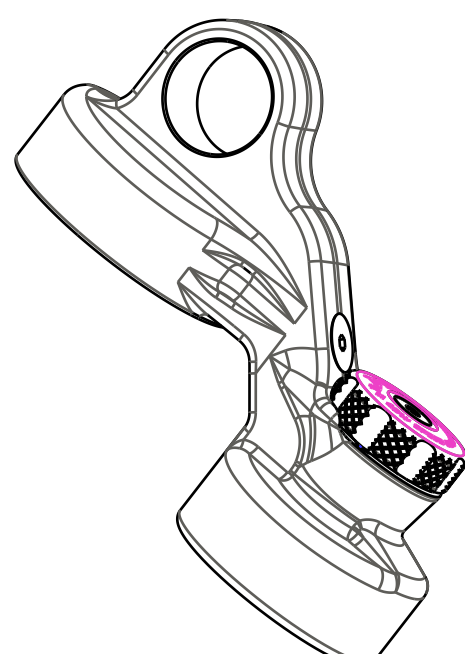


4

3

2

1



Bodycap: Piggyback [1.070 Bore, Ø.500 Shaft] Van RC w/BLEED

(010-01-002)

(039-00-042)

TORQUE:
7±2 IN.LB.

019-01-049
Screw [M3 X 6mm] Socket Flat Head, SS w/ Patchlock

210-03-292
Knob: Bomber CR, Comp. Adj. Gold Ano

010-01-002
Ball [Ø 0.0938] Steel

039-00-042
Spring: Detent [.13 TLG X .088 X 22 lb/in]

018-01-026
Screw [#6-32 X .250 TLG]

TORQUE:
14±2 IN.LB.

029-03-006
O-Ring (-006) [1.070 C.S. X .114 ID]

GREASE:
THIN LAYER
HI TEMP GREASE (BLUE)

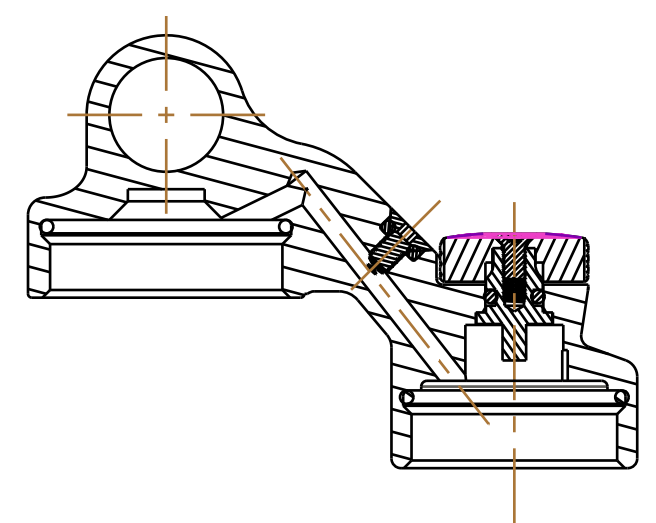
029-03-023
Seals:O-Ring [(-023) .070 C.S. X 1.051 ID] Standard, N-70, Static

GREASE:
THIN LAYER
SLICK HONEY

029-03-025
O-Ring (-025) [1.070 C.S. X 1.176 ID]

029-00-008
O-Ring (-008) [1.070 C.S. X .176 ID]

210-15-067
Damping Adj. Part: Low Speed , Van RC [7/64 Hex]



SECTION A-A

		FOX Factory, Inc.	Ph 831-768-1100
		130 Hangar Way, Watsonville, CA 95076 USA	Fax 831-768-9312
TITLE	Body Cap Assy: Piggyback, 2019 Bomber CR [1.070 Bore, .500 Shaft]		
SIZE	DWG. NO.	804-12-010-KIT	
PLOT SCALE	1:1	SHEET 1 OF 1	

PROPRIETARY
THIS DOCUMENT CONTAINS CONFIDENTIAL, PROPRIETARY INFORMATION
THAT IS FOX PROPERTY. DO NOT DISCLOSE TO OR DUPLICATE
FOR OTHERS EXCEPT AS AUTHORIZED BY FOX.

4

3

2

ProE ASSEM