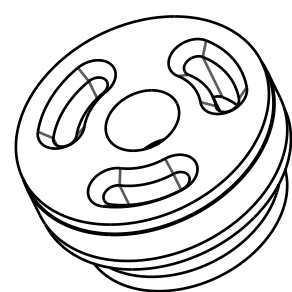


4

3

2

1



Bearing: External, Turcon [.136W x .8690D x .031THK]
 002-02-077

Seals: O-Ring [17.0MM ID x 1.0MM CS] Metric, N-70, Static
 029-08-040

Piston: Damping, .868in Bore, .250in Post, X2
 222-01-317

Valve: [.700 OD X .252 ID X .0045 TH]
 044-04-070

Valve: Ring Shim [.700 OD X 0.610 ID X .008 TH]
 043-15-073

Valve: [.600 OD X .252 ID X .0045 TH]
 044-04-060

Valve: [.500 OD X .252 ID X .0045 TH]
 044-04-050

Valve: [.350 OD X .252 ID X .020 TH]
 044-20-035

IMPORTANT:
 Piston Orientation

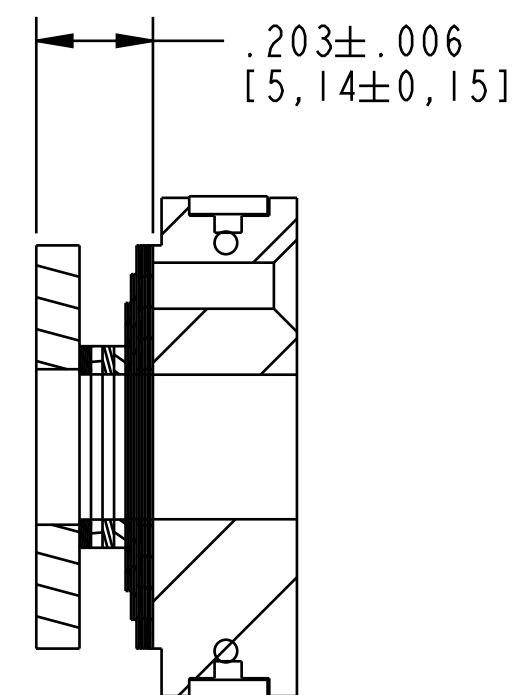
(044-04-070)

(044-04-060)

(044-04-050)

(044-20-035)

233-00-286
 Spacer: Topout Plate [.250 ID X .783 OD X .070 THK] Steel



SECTION A-A
 SCALE 3:1

		FOX Factory, Inc. <small>130 Hangar Way, Watsonville, CA 95076 USA</small>		<small>Ph 831-768-1100 Fax 831-768-9312</small>
TITLE Piston Assembly: X2, .868in Bore, CM				
SIZE C	DWG. NO. 805-00-108-KIT			SHEET 1 OF 1
PLOT SCALE .60:1				ProE ASSEM

- PROPRIETARY -
 THIS DOCUMENT CONTAINS CONFIDENTIAL, PROPRIETARY INFORMATION
 THAT IS FOX PROPERTY. DO NOT DISCLOSE TO OR DUPLICATE
 FOR OTHERS EXCEPT AS AUTHORIZED BY FOX.

4

3

2

ProE ASSEM