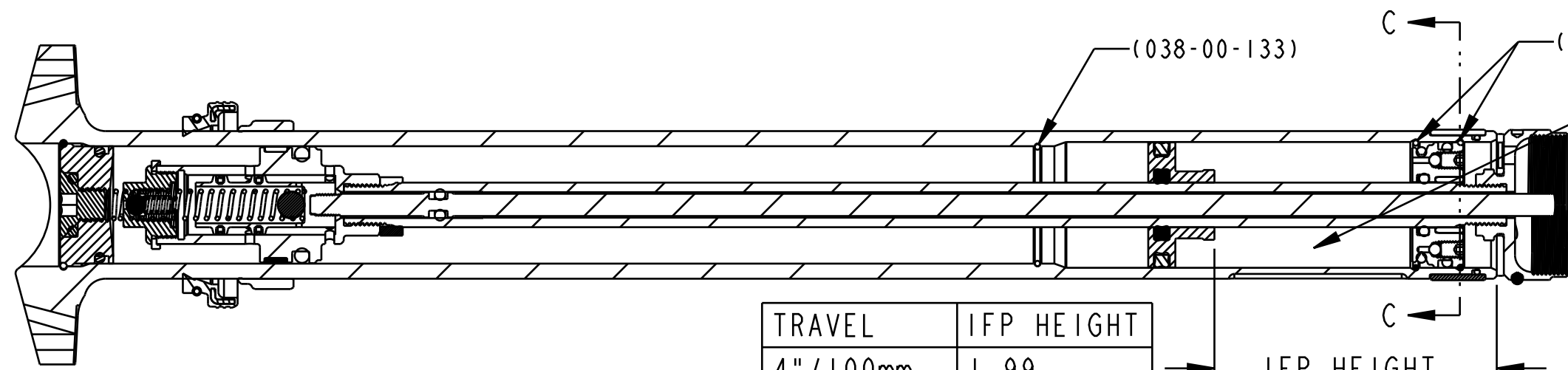


4

3

2

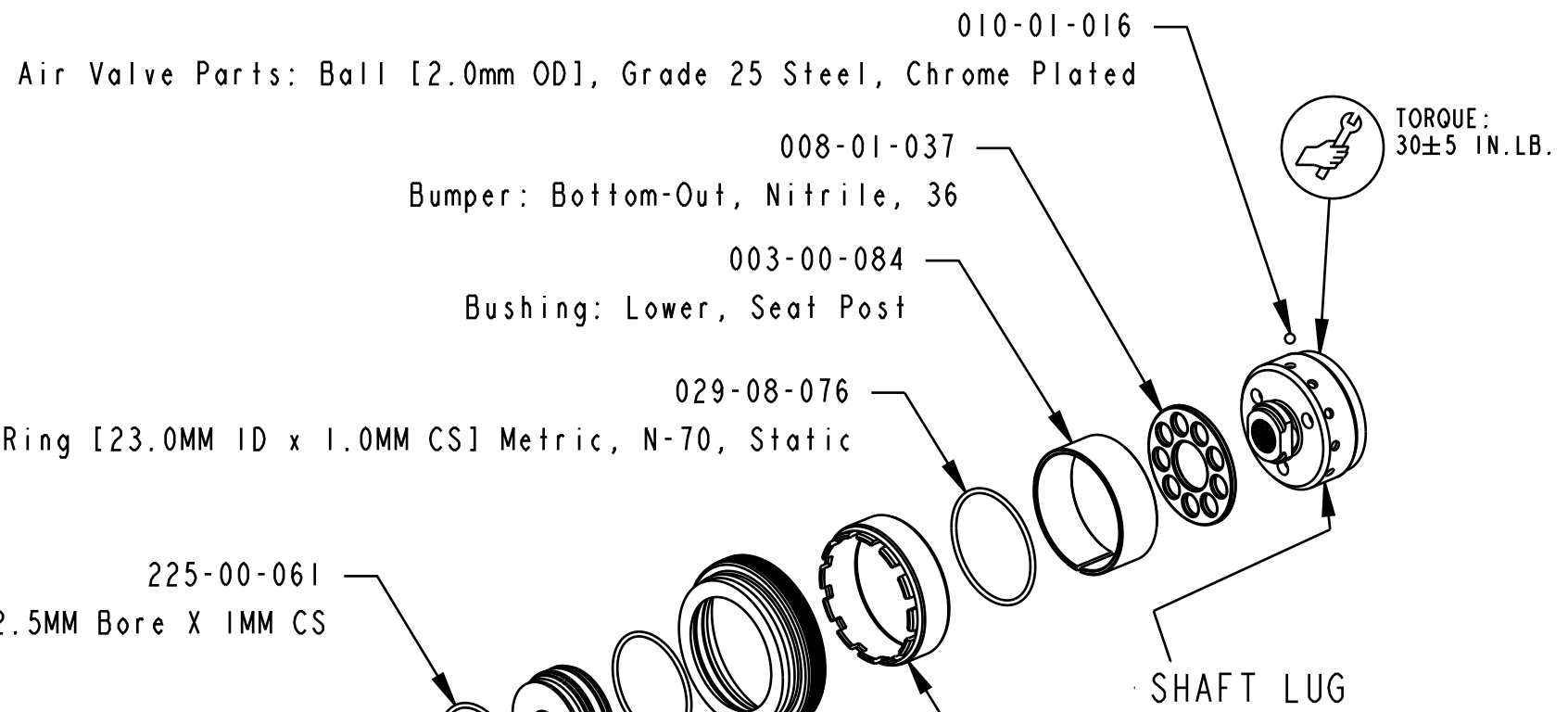
1



TRAVEL	IFP HEIGHT
4" / 100mm	1.99
5" / 125mm	1.99
6" / 150mm	1.87

ADD 0.5cc TO 1cc OF FLOAT FLUID TO IFP CHAMBER

SET IFP NITROGEN PRESSURE TO 275±10 PSI.



Air Valve Parts: Ball [2.0mm OD], Grade 25 Steel, Chrome Plated

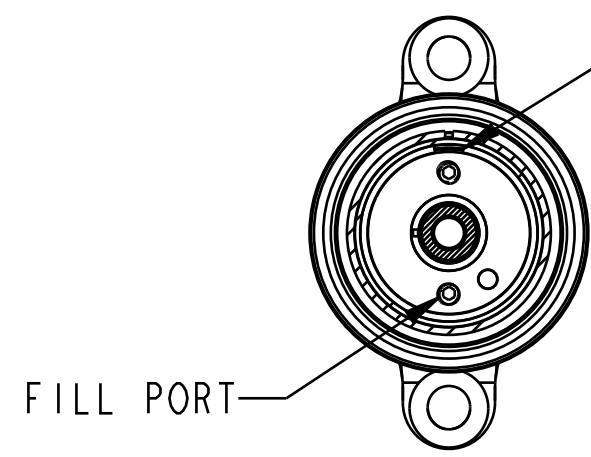
Bumper: Bottom-Out, Nitrile, 36

Bushing: Lower, Seat Post

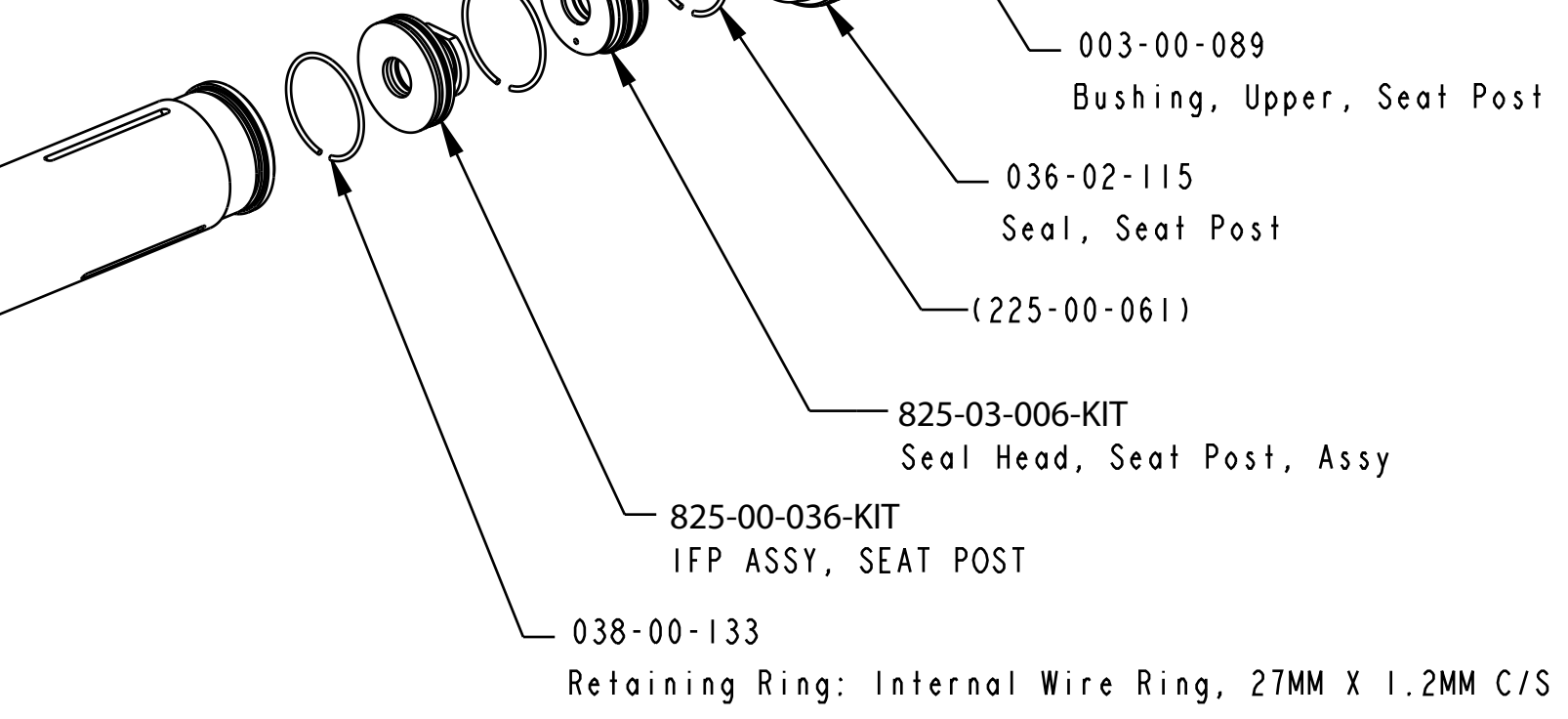
Seals: O-Ring [23.0MM ID x 1.0MM CS] Metric, N-70, Static

TORQUE: 30±5 IN.LB.

SEAL HEAD FILL PORT SHALL BE POSITIONED 180° FROM RETAINING RING SPLIT AFTER INSTALLATION.



Retaining Ring: Wire 22.5MM Bore X 1MM CS

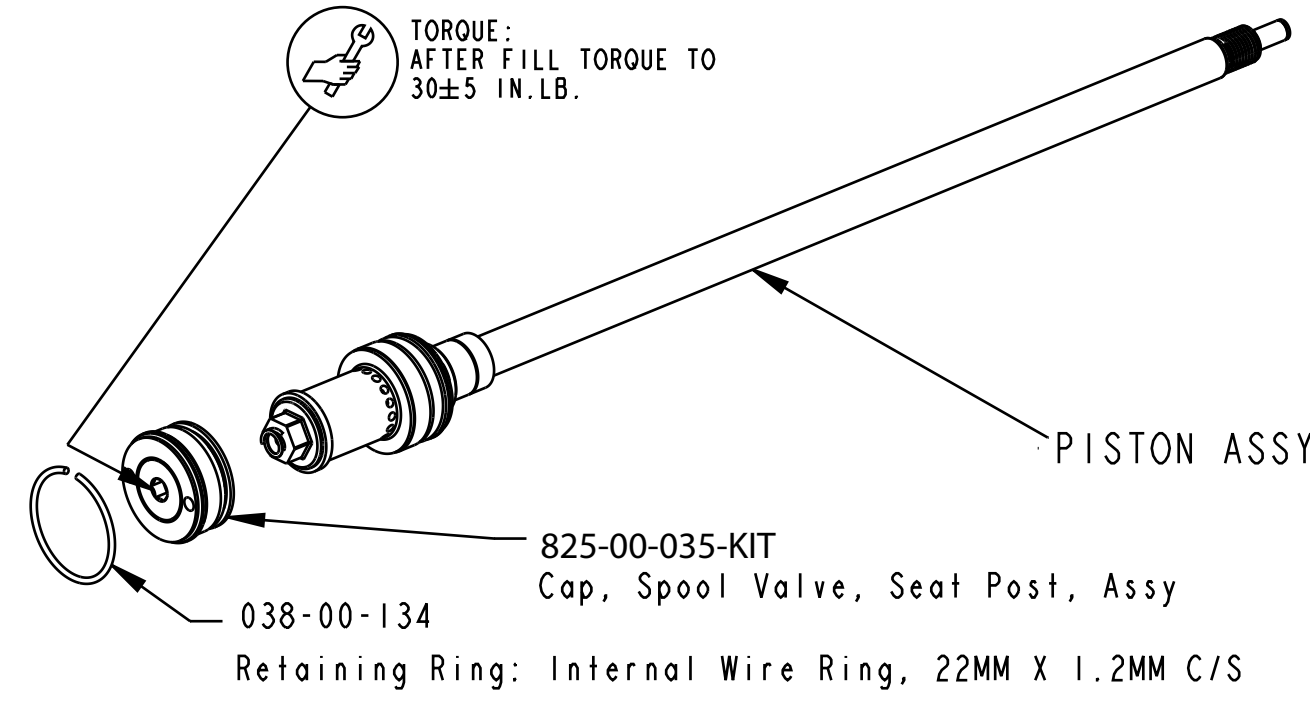


825-03-006-KIT Seal Head, Seat Post, Assy

825-00-036-KIT IFP ASSY, SEAT POST

038-00-133 Retaining Ring: Internal Wire Ring, 27MM X 1.2MM C/S

TORQUE: AFTER FILL TORQUE TO 30±5 IN.LB.



825-00-035-KIT Cap, Spool Valve, Seat Post, Assy

038-00-134 Retaining Ring: Internal Wire Ring, 22MM X 1.2MM C/S

PROPRIETARY - THIS DOCUMENT CONTAINS CONFIDENTIAL, PROPRIETARY INFORMATION THAT IS FOX PROPERTY. DO NOT DISCLOSE TO OR DUPLICATE FOR OTHERS EXCEPT AS AUTHORIZED BY FOX.

FOX FOX Factory, Inc. Ph 831-768-1100
 130 Hangar Way, Watsonville, CA 95076 USA Fax 831-768-9312

TITLE Assy Dwg, Upper Post
 2018 Transfer

SIZE DWG. NO. C
 PLOT SCALE 0.70:1 SHEET 1 OF 1

4

3

2

1

ProE ASSEM