

Bearing: Glide Ring, Blue Turcon

Seals: O-Ring [20.0MM ID x 1.0MM CS] Metric, N-70, Static

Piston: (T) 2014 Float BV [0.940 Bore, 3x .052 RD ports] 7075-T6, Non-Grained

044-08-040  
Valve: [.400in OD x .252in ID x .008in TH]

044-08-080  
Valve: [.800 OD X .252 ID X .008 TH]

044-06-070  
Valve: [.700 OD X .252 ID X .006 TH]

(044-06-070)  
044-04-060  
Valve: [.600 OD X .252 ID X .0045 TH]

(044-04-060)  
044-04-050  
Valve: [.500 OD X .252 ID X .0045 TH]

(044-04-050)

044-10-040  
Valve: [.400 OD X .252 ID X .010 TH]

(044-10-040)

044-08-050  
Valve: [.500 OD X 0.252 ID X 0.008 TH]

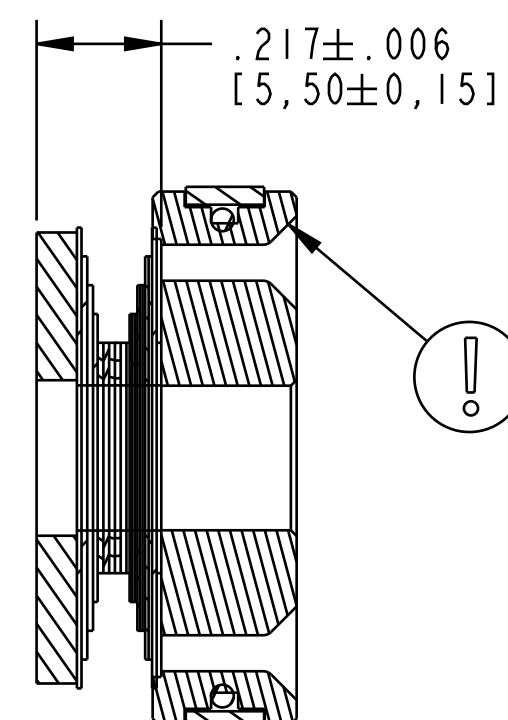
044-10-060  
Valve: [.600 X .252 X .010]

044-10-070  
Valve: [.700 OD X .252 ID X .010 TH]

(044-08-080)

233-00-231  
Spacer: Topout Plate [.250 ID X .783 OD X .070 THK] Steel

IMPORTANT:  
NOTE PISTON ORIENTATION



IMPORTANT:  
NOTE PISTON ORIENTATION

SECTION A-A  
SCALE 3:1

		<b>FOX Factory, Inc.</b>	Ph 831-768-1100
		130 Hangar Way, Watsonville, CA 95076 USA	Fax 831-768-9312
TITLE Piston Assembly: 2016 X2, CL/CM, .250 Post, .940 Bore			
SIZE	DWG. NO.	805-00-093-KIT	
C			
PLOT SCALE   .60:1		SHEET   OF   1	

- PROPRIETARY -  
THIS DOCUMENT CONTAINS CONFIDENTIAL, PROPRIETARY INFORMATION  
THAT IS FOX PROPERTY. DO NOT DISCLOSE TO OR DUPLICATE  
FOR OTHERS EXCEPT AS AUTHORIZED BY FOX.