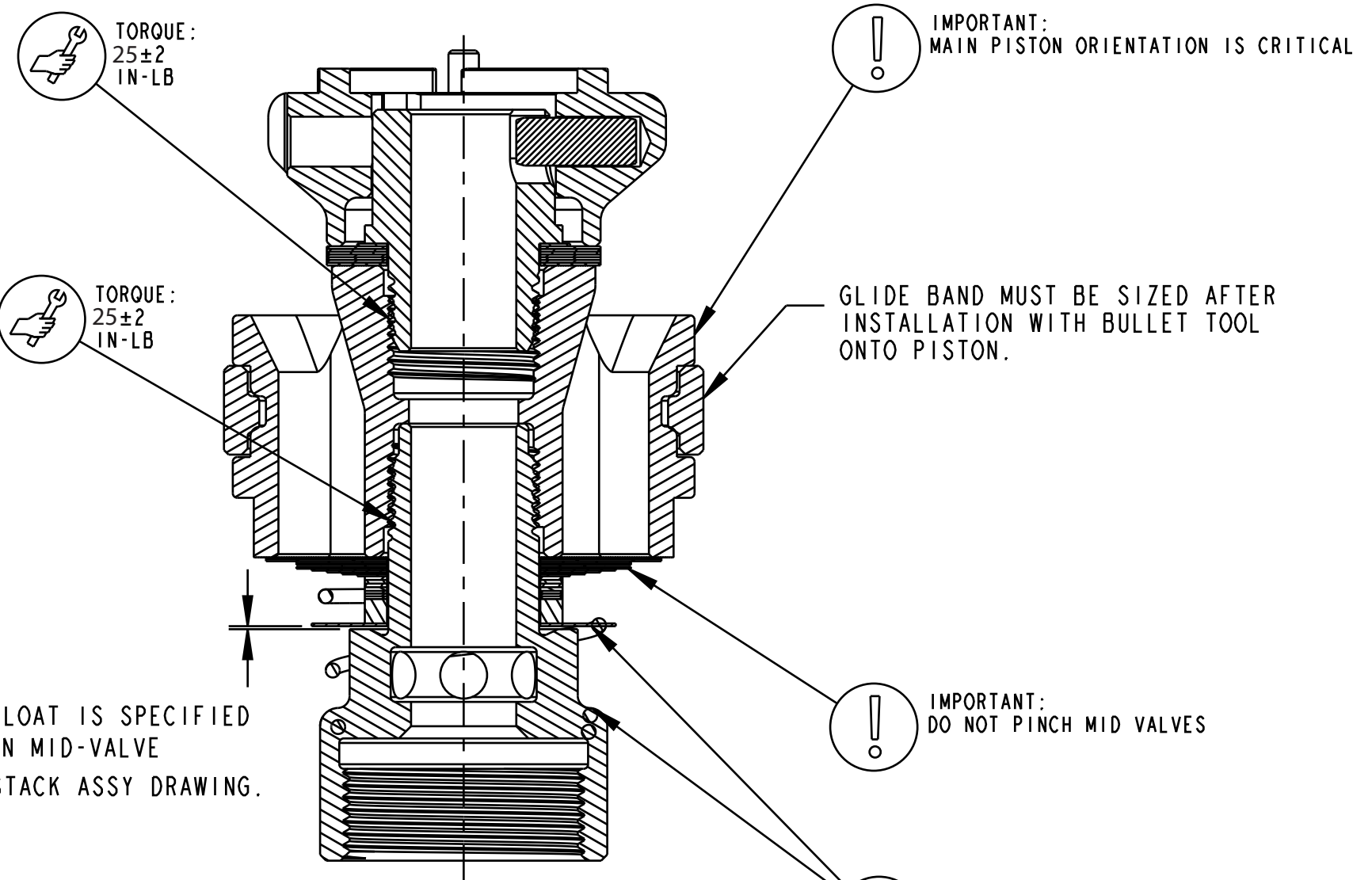
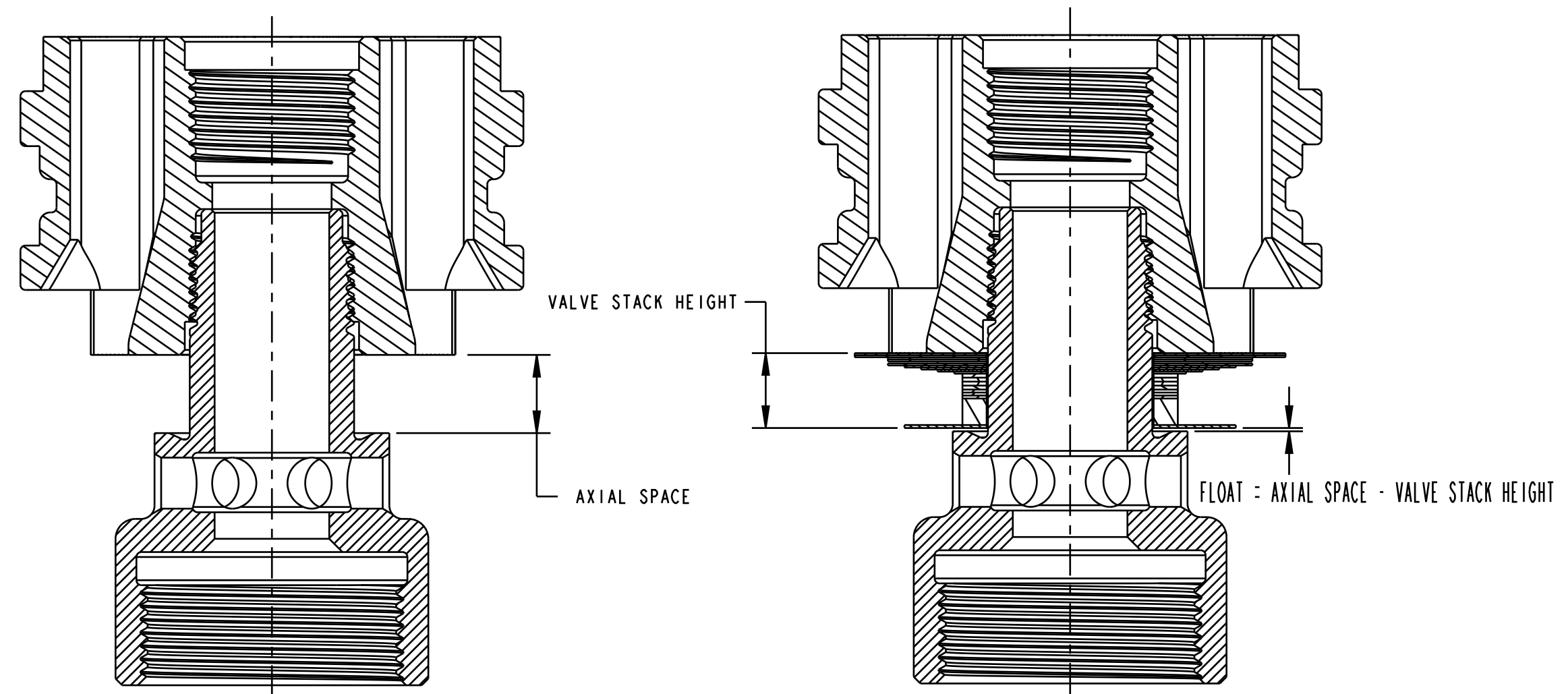


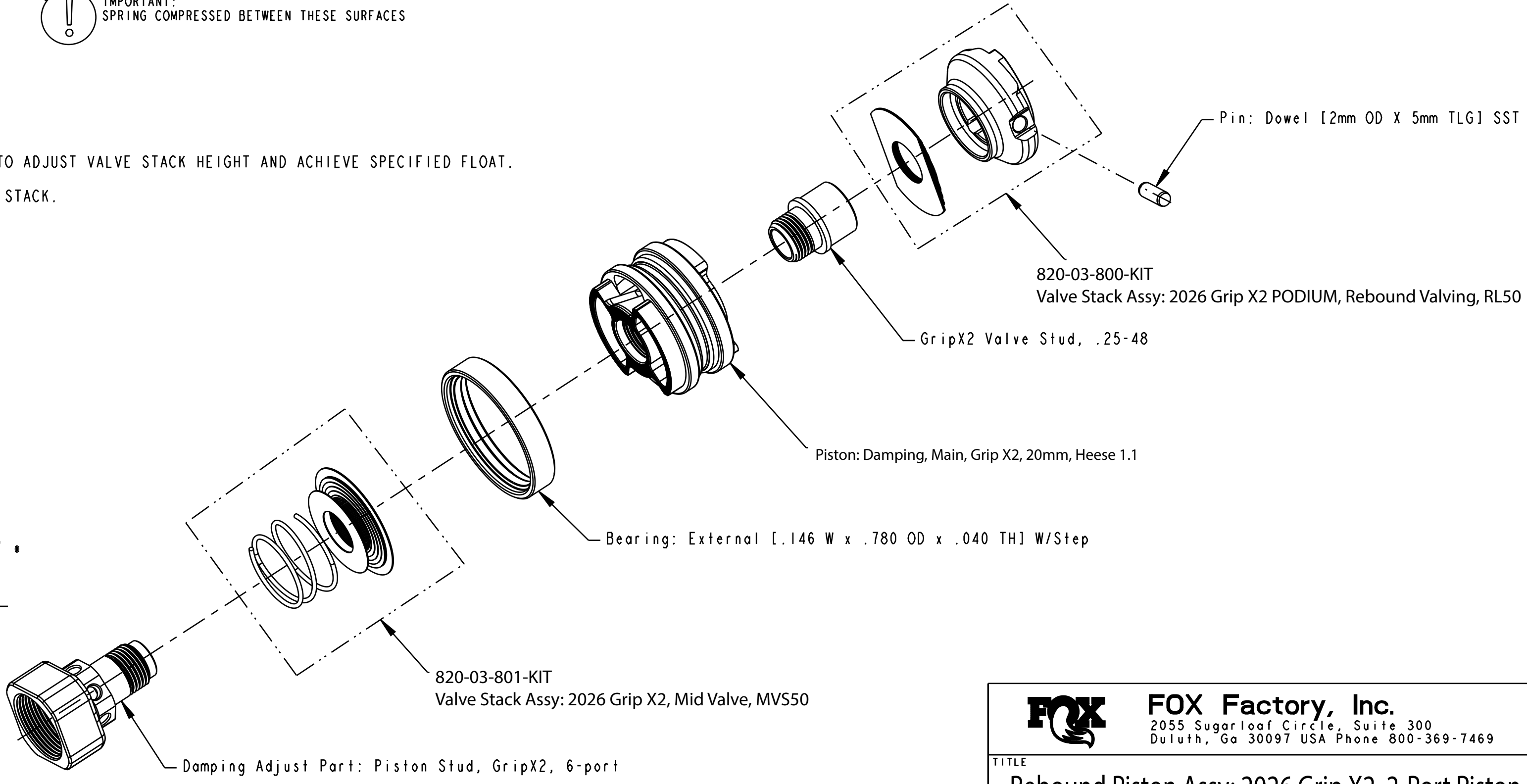
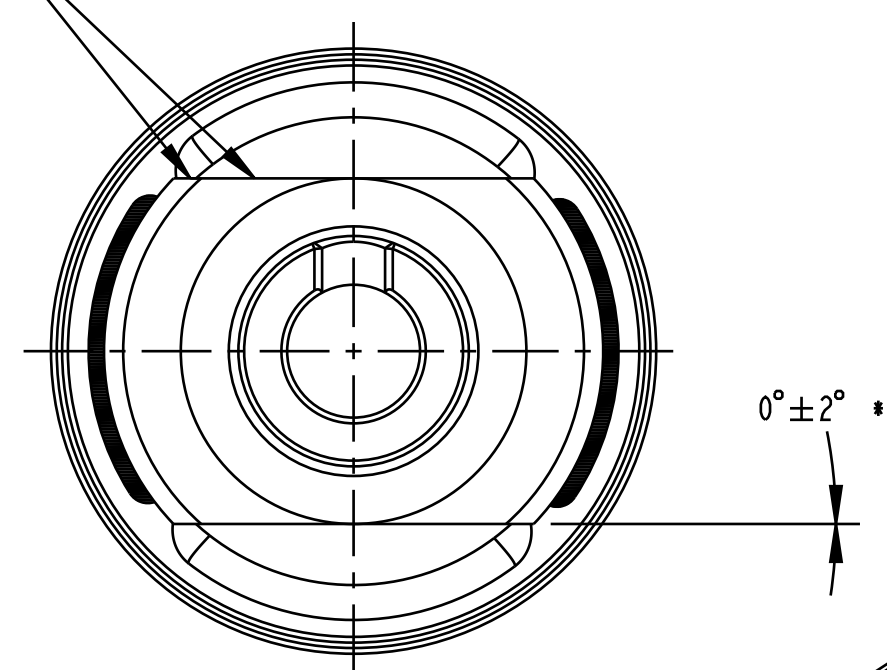
— PROPRIETARY —
 THIS DOCUMENT CONTAINS CONFIDENTIAL, PROPRIETARY INFORMATION THAT IS FOX PROPERTY. DO NOT DISCLOSE TO OR DUPLICATE FOR OTHERS EXCEPT AS AUTHORIZED BY FOX.



- FLOAT ADJUSTMENT PROCEDURE:
- 1) INSTALL PISTON ON PISTON STUD WITHOUT VALVES.
 - 2) TORQUE PISTON.
 - 3) MEASURE AXIAL SPACE.
 - 4) CONFIGURE SHIMS AS NEEDED PER MID VALVE ASSY DWG TO ADJUST VALVE STACK HEIGHT AND ACHIEVE SPECIFIED FLOAT.
 - 5) REMOVE PISTON AND REINSTALL WITH CONFIGURED VALVE STACK.



IMPORTANT: STRAIGHT SURFACES OF REBOUND VALVES MUST BE ALIGNED TO PISTON COMP PORTS WITHIN (±2°) USE TOOL 398-01-306



FOX Factory, Inc. 2055 Sugarloaf Circle, Suite 300 Duluth, Ga 30097 USA Phone 800-369-7469	
TITLE	
Rebound Piston Assy: 2026 Grip X2, 2-Port Piston	
SIZE	DWG. NO.
C	820-03-803-KIT
PLOT SCALE: 2:1	
REV	A
SHEET: 1 OF 2	