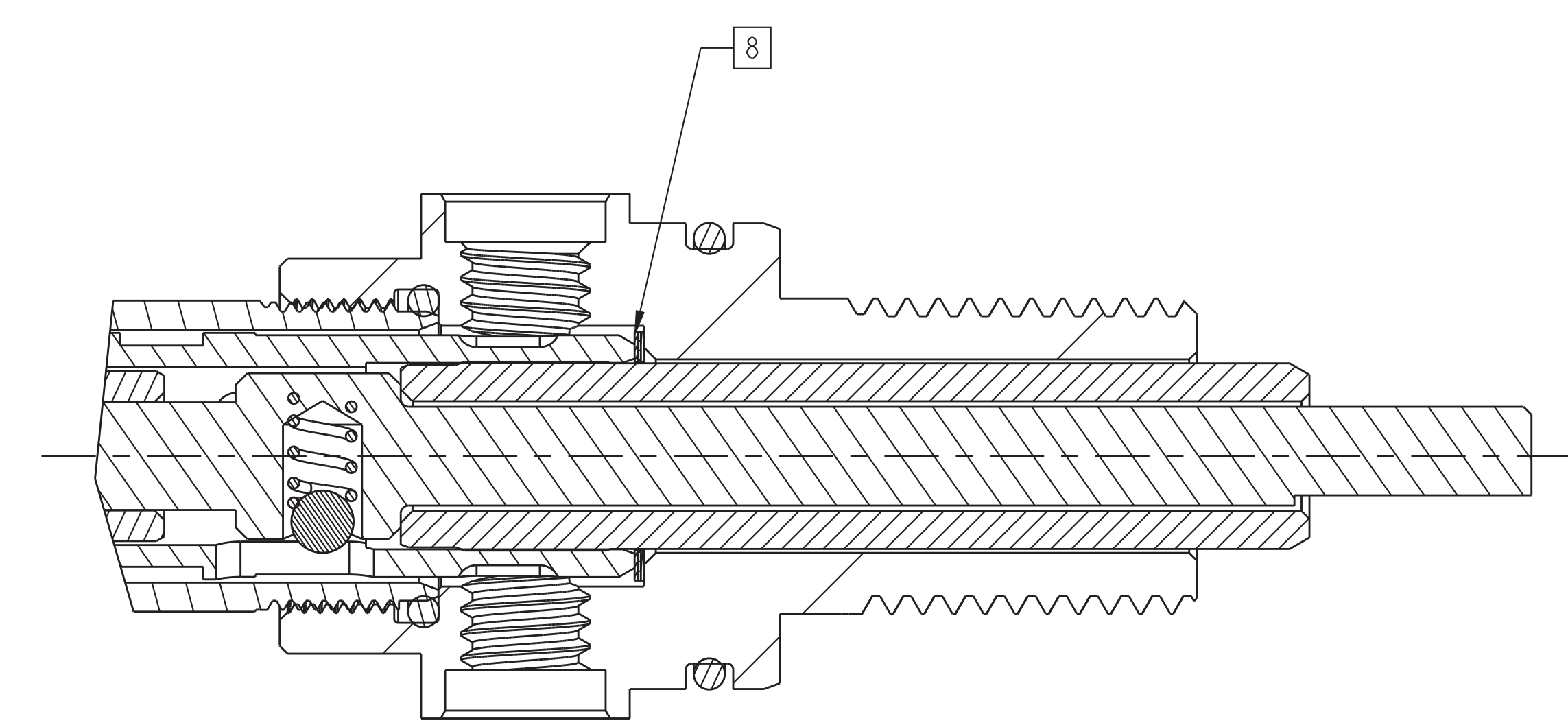
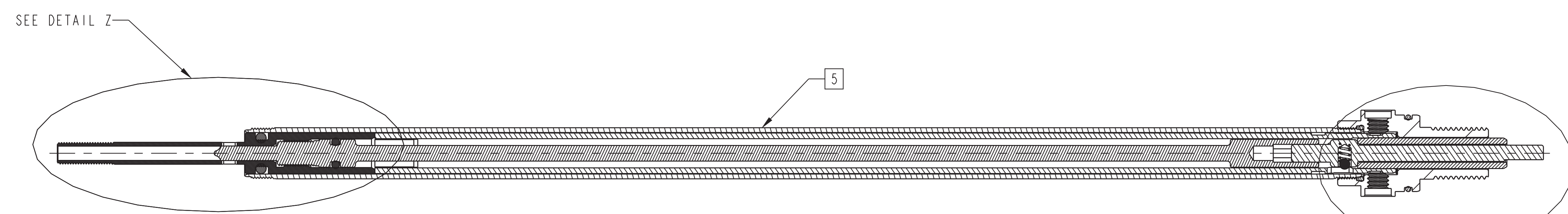


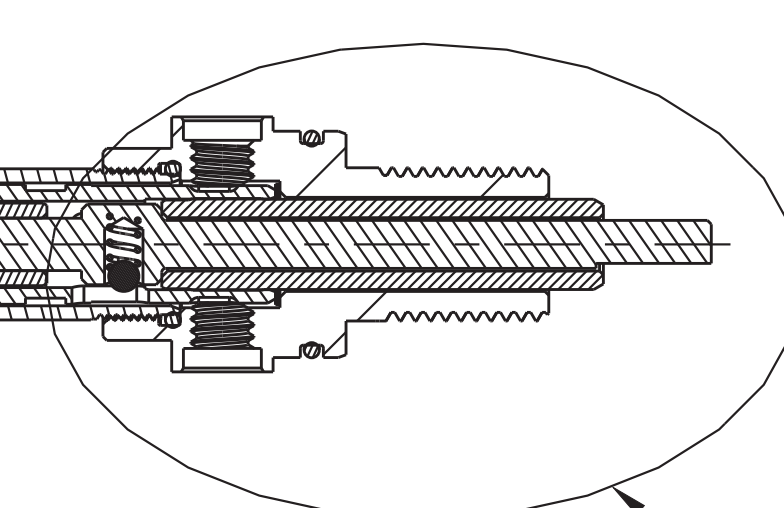
DETAIL Z  
SCALE 6:1



DETAIL Y  
SCALE 6:1



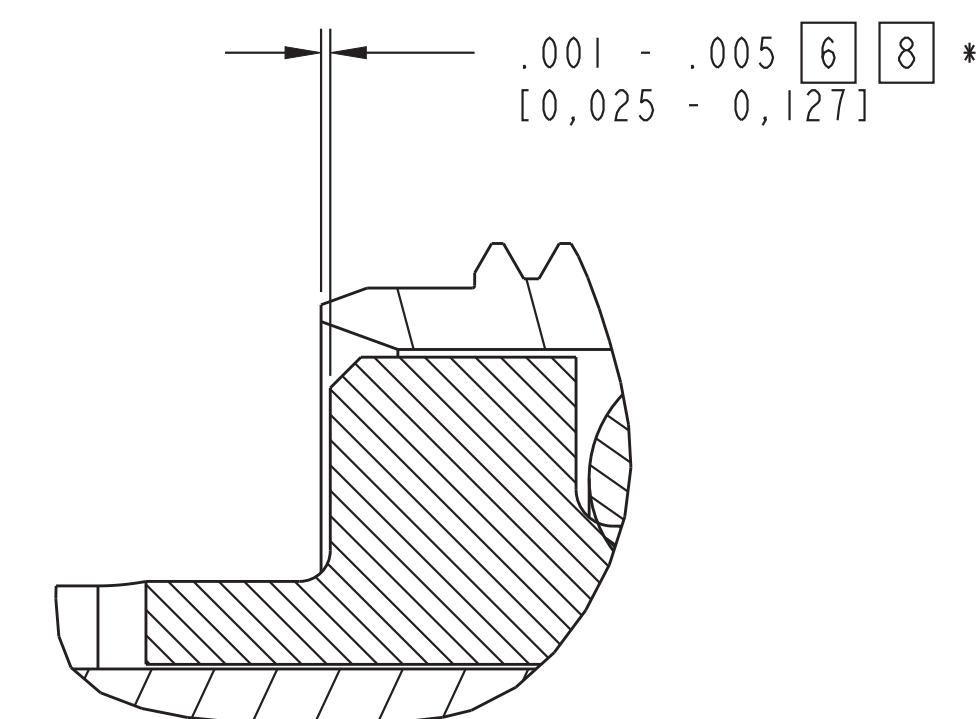
SECTION A-A



SEE DETAIL Y

NOTES (CONTINUED):

- [5] WITH DAMPER SHAFT SUB-ASSY IN THIS APPROXIMATE CONFIGURATION
  - [6] DIMENSION IS FROM DAMPER SHAFT END TO FACE OF Damping Adj Part: Shaft, HSR, GripX2  
(Damping Adj Part: Shaft, HSR, GripX2 IS FLUSH OR RECESSED INSIDE DAMPER SHAFT)
  - [7] FULLY SEAT Damping Adj Part: Shaft, HSR, GripX2 AGAINST 2-PIECE SHAFT WITH APPROXIMATELY 1-5 lb OF FORCE
  - [8] ADD OR SUBTRACT WASHERS Valve: Metric [8.00mm OD X 6mm ID X 0.10mm THK] TO ACHIEVE SPECIFIED DIMENSION
9. \* AFTER ASSY IS TORQUED TO SPECIFICATION, VERIFY LSR AND HSR DETENTS CLICK AUDIBLY WITH ACCEPTABLE RESISTANCE



DETAIL W  
SCALE 16:1