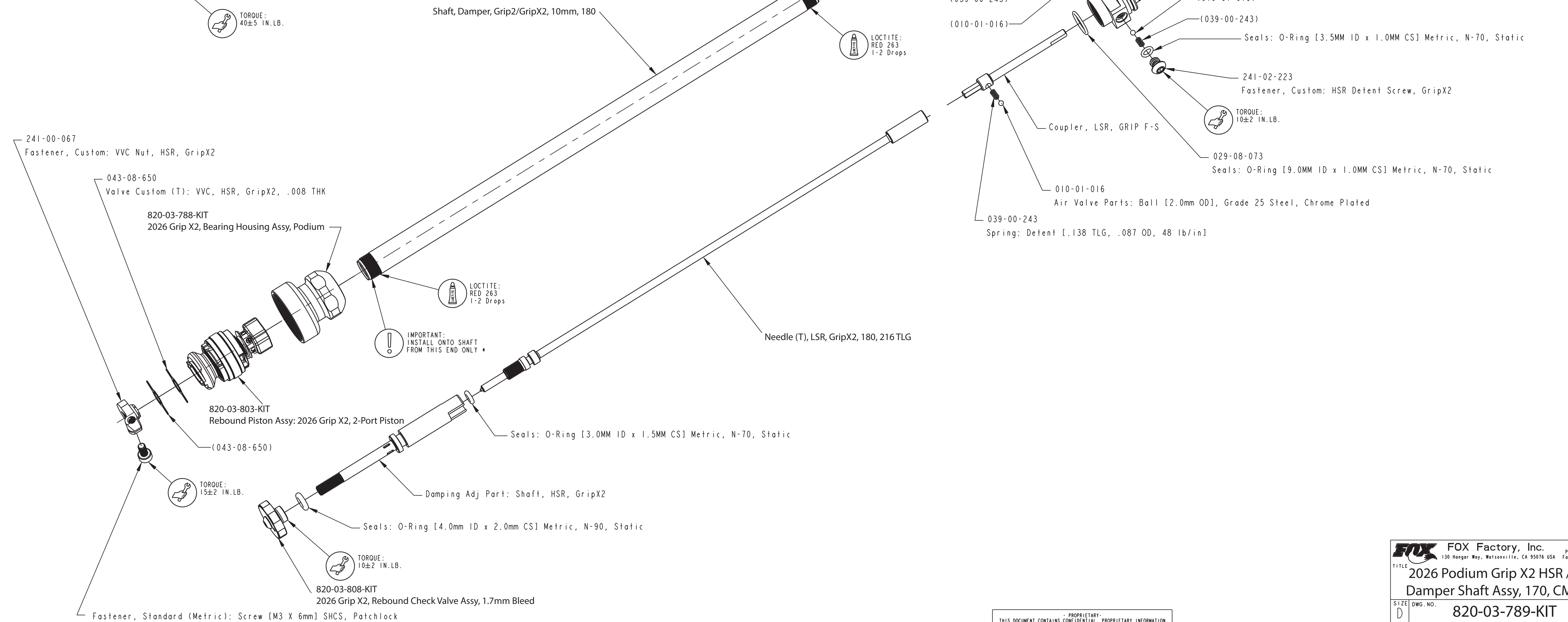
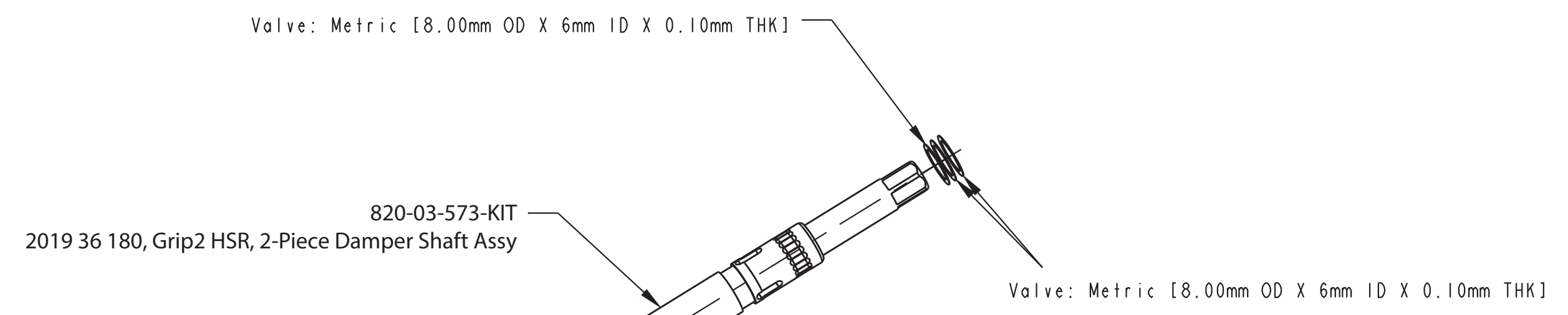
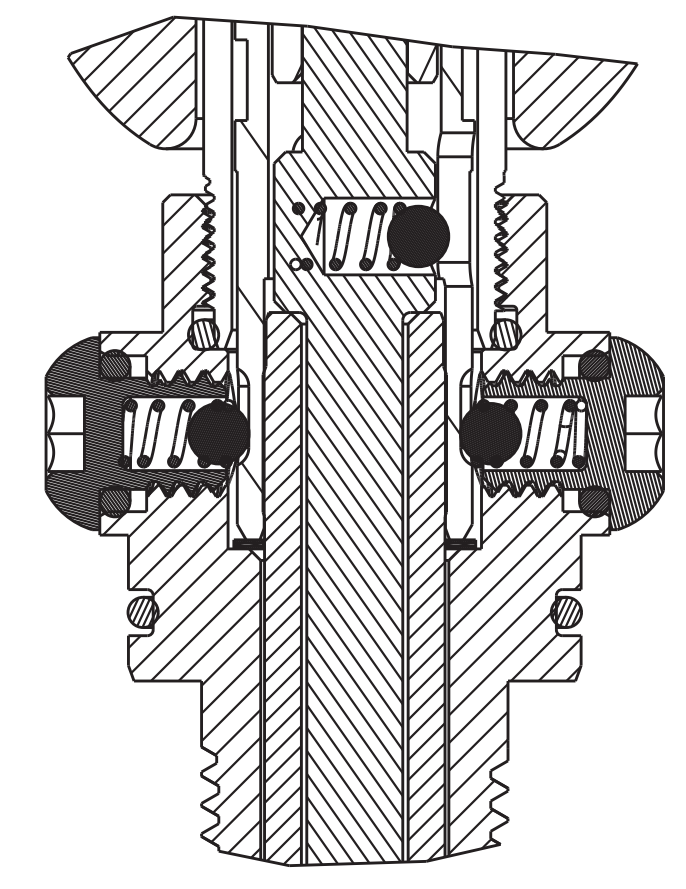


- * ASSEMBLY INSTRUCTIONS:
- 1) TIGHTEN VVC NUT UNTIL VVC LEAF SPRING MAKES CONTACT WITH POSTS ON VVC PLATE AND ROTATION STOPS
 - 2) ORIENT VVC LEAF SPRING TO THE APPROX. CENTER OF ITS ADJUSTMENT RANGE
 - 3) PLACE .050 [1,27] THICK SHIM AT "X"
 - 4) HOLD VVC NUT TO PISTON ASSY AND TORQUE HSR SHAFT TO $2 \pm .5$ in-lb
 - 5) TORQUE M3 SHCS TO SPECIFIED TORQUE 15 ± 2 IN.LB.
- SEE SHEET 2 FOR ADDITIONAL ASSEMBLY INSTRUCTIONS



PROPRIETARY - PROPRIETARY INFORMATION
THIS DOCUMENT CONTAINS CONFIDENTIAL, PROPRIETARY INFORMATION
THAT IS FOR PROPERTY. DO NOT DISCLOSE TO OR DUPLICATE
FOR OTHERS EXCEPT AS AUTHORIZED BY FOX.