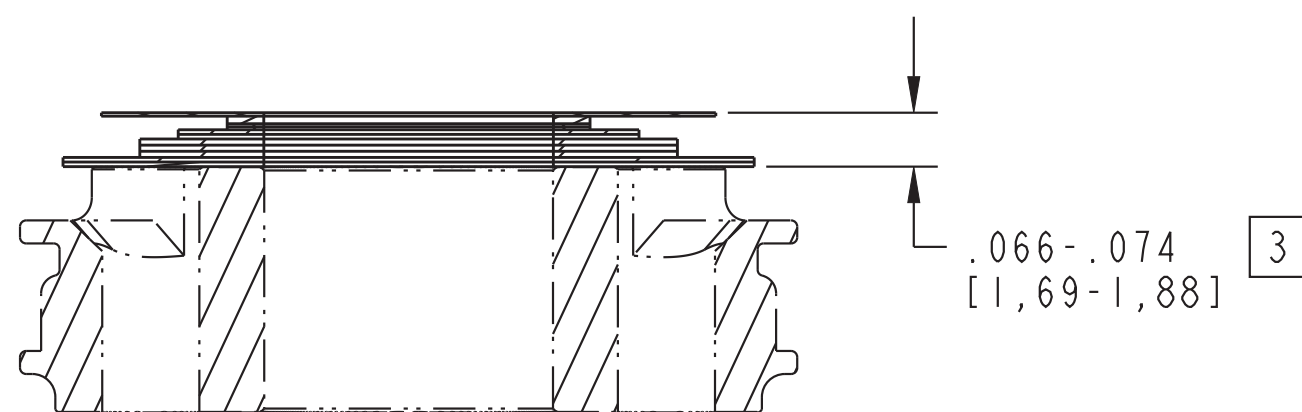


4

3

2

1



040-04-080  
Valve: [.800 OD X .377 ID X .0045 TH]

045-00-148  
Valve: Metric [12.0 mm OD X 9.58mm ID X 0.25mm TH]

Valve: Metric [12.0 mm OD X 9.58mm ID X 0.10mm TH]

Valve: [.600 OD X .377 ID X .006 TH]

Valve: [.700 OD X 0.377 ID X 0.008 TH]

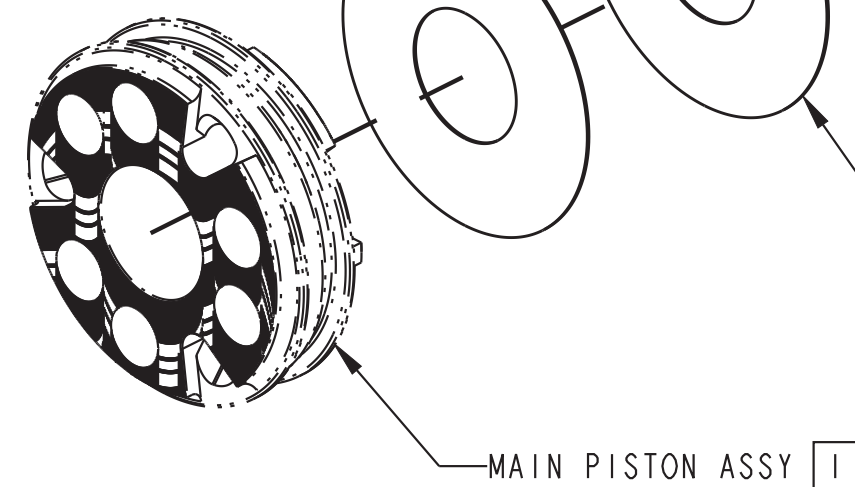
Valve: [.900 OD X .377 ID X .006 TH]

Valve: [.700 OD X 0.377 ID X 0.008 TH]

Valve: [.900 OD X .377 ID X .006 TH]

Valve: [.600 OD X .377 ID X .006 TH]

IMPORTANT:  
DO NOT  
REMOVE



MANUFACTURING NOTES:

1 MAIN PISTON ASSEMBLY SHOWN FOR ORIENTATION PURPOSES. NOTE PROPER ORIENTATION OF PISTON--SEE VALVING ASSEMBLY DRAWING FOR DETAILS. IMAGE SHOWN MAY NOT REPRESENT ACTUAL PART GEOMETRY.

2 INDICATED SPACERS MAY BE ADDED OR REMOVED TO ADJUST NUMBER OF REBOUND CLICKS.

3 DIMENSION APPLIES TO VALVE STACK AS SHOWN.

DESIGN ENGINEERING AND PRODUCT PERFORMANCE NOTES:

4. REBOUND VALVE STACK NOMINAL MINIMUM THICKNESS (NMT): .057 [1,45]

- PROPRIETARY -  
THIS DOCUMENT CONTAINS CONFIDENTIAL, PROPRIETARY INFORMATION  
THAT IS FOX PROPERTY. DO NOT DISCLOSE TO OR DUPLICATE  
FOR OTHERS EXCEPT AS AUTHORIZED BY FOX.

**FOX** FOX Factory, Inc. Ph 831-768-1100  
130 Hangar Way, Watsonville, CA 95076 USA Fax 831-768-9312

TITLE  
Valve Stack Assy: 2022 FLOAT X & DHX,  
Rebound, CPR, .057 NMT

SIZE DWG. NO. 805-05-707-KIT  
C  
PLOT SCALE 2:1 SHEET 1 OF 1

4

3

2

1