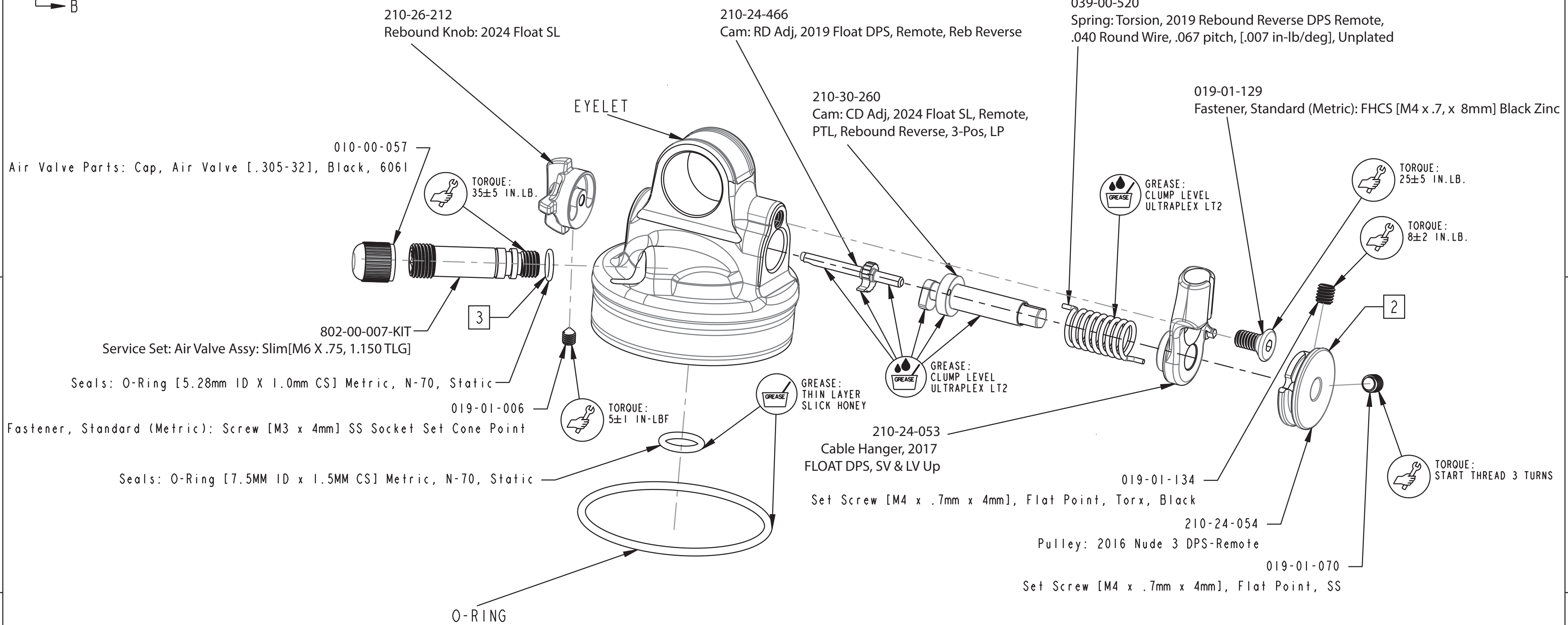
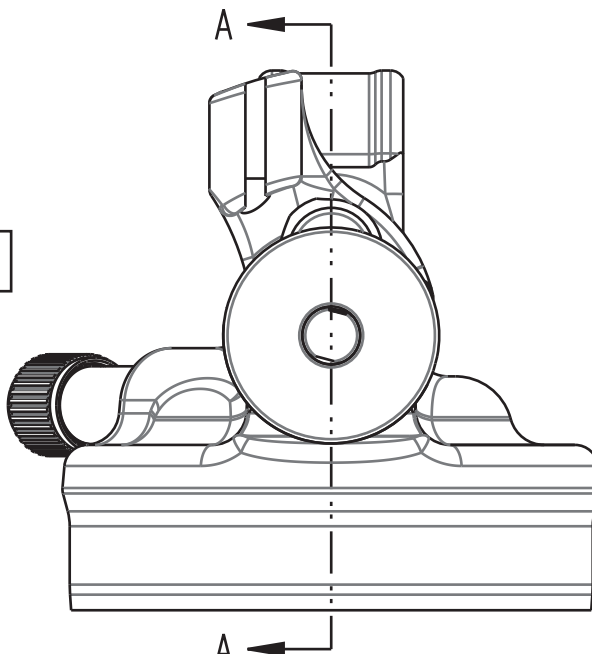
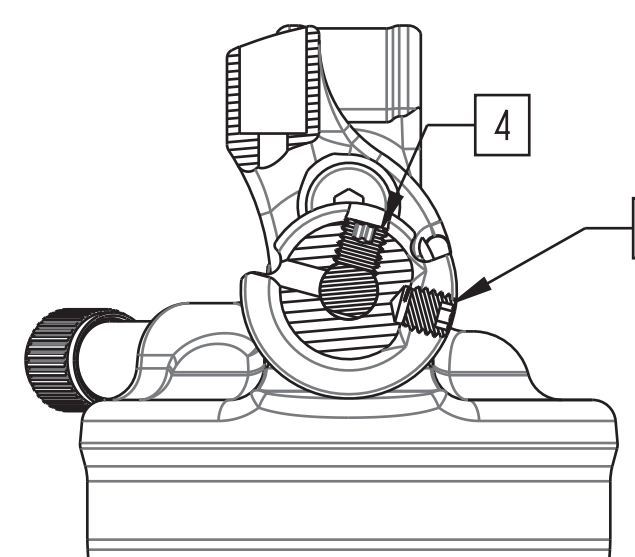
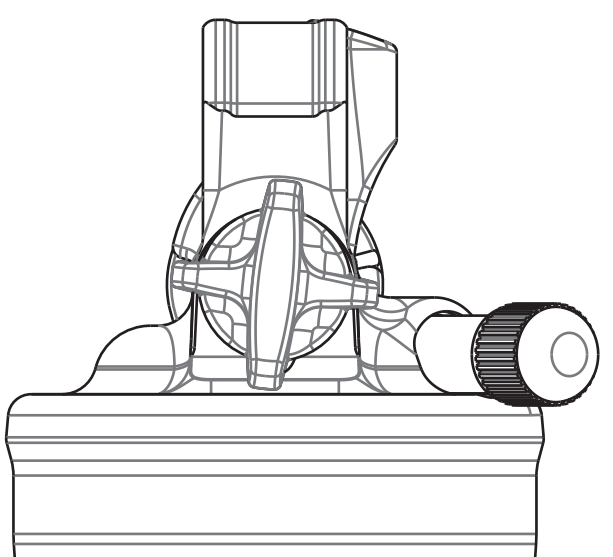
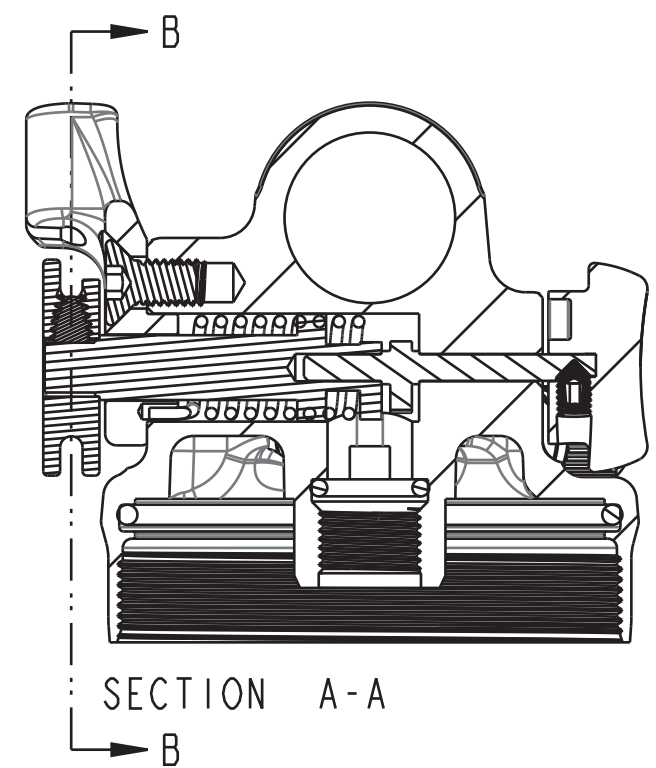


4

3

2

1



- 2 PULLEY TO BE FULLY SEATED AGAINST COMPRESSION CAM FLANGE.
- 3 APPLY THIN LAYER SLICK HONEY TO INSTALL ON AIR VALVE. APPLY THIN LAYER FLOAT FLUID ON INSTALLED AIR VALVE O-RING PRIOR TO AIR VALVE INSTALLATION.
- 4 BLACK TORX SET SCREW FIXES PULLEY TO CAM.
- 5 STAINLESS HEX SET SCREW FIXES CABLE TO PULLEY.

PROPRIETARY - THIS DOCUMENT CONTAINS CONFIDENTIAL, PROPRIETARY INFORMATION THAT IS FOX PROPERTY. DO NOT DISCLOSE TO OR DUPLICATE FOR OTHERS EXCEPT AS AUTHORIZED BY FOX.

FOX Factory, Inc. Ph 831-768-1100
 130 Hangor Way, Watsonville, CA 95076 USA Fax 831-768-9312

TITLE **Eyelet Assy: 2024 Float SL, PTL, Remote Up, Reb Reverse**

SIZE DWG. NO. **C 808-17-549-KIT**

PLOT SCALE 1.5:1 SHEET 1 OF 1