

4

3

2

1

D

D

C

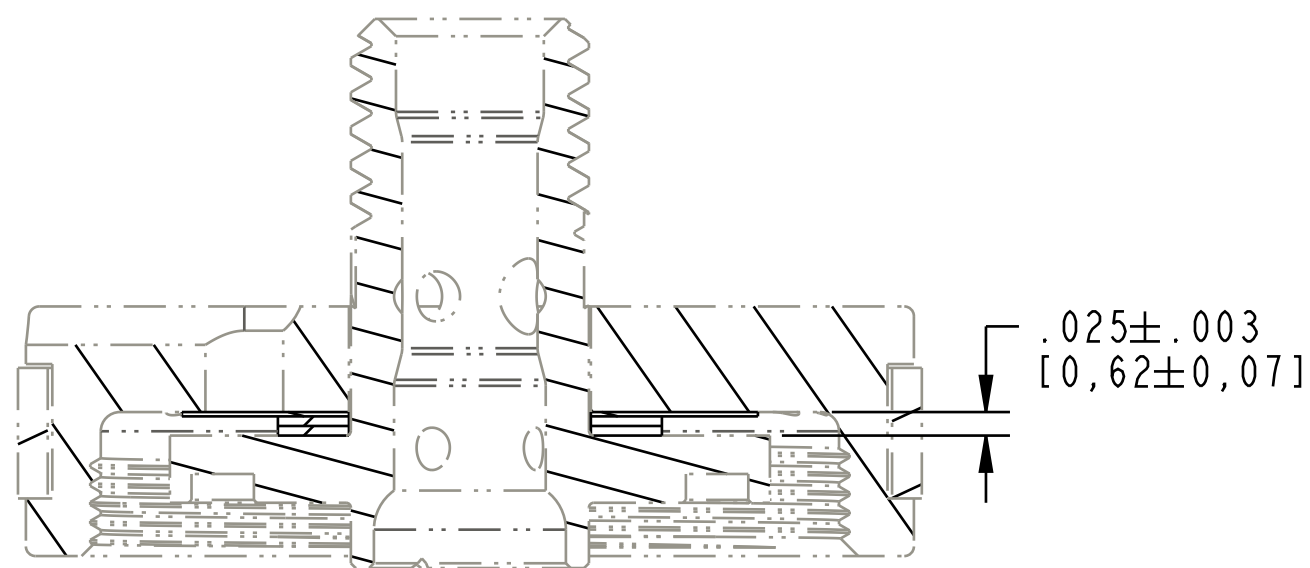
C

B

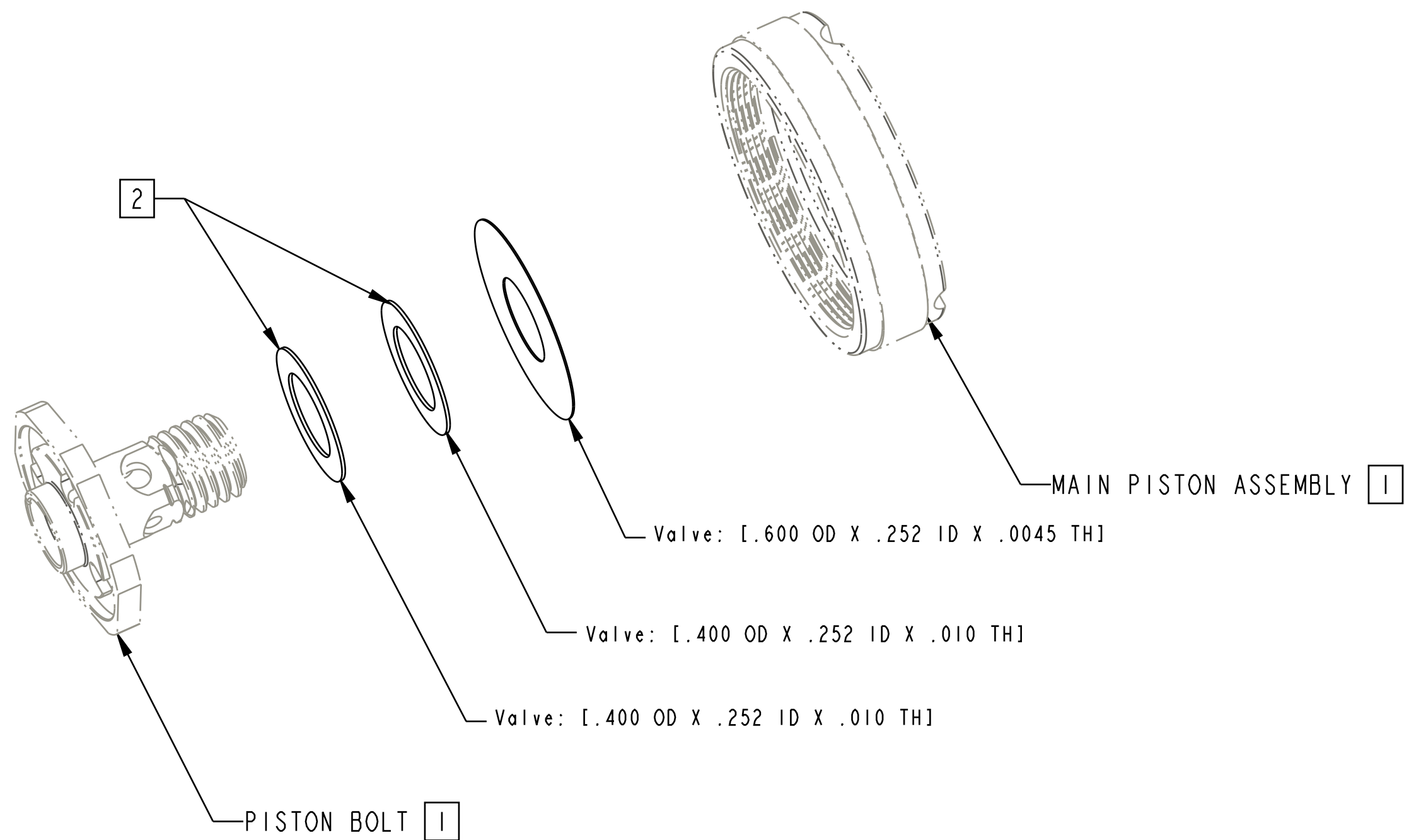
B

A

A



SECTION B-B
SCALE 5.000



NOTES: UNLESS OTHERWISE SPECIFIED

[1] PISTON AND PISTON BOLT PARTS SHOWN FOR ORIENTATION PURPOSES. MAY NOT REPRESENT ACTUAL PART GEOMETRY

[2] 1 SPACER MAY BE REMOVED. 1 OR 2 SPACERS MAY BE ADDED TO ADJUST NUMBER OF REBOUND CLICKS. MATCH OUTSIDE DIAMETER OF ADJACENT SPACER. .010 INCH MIN. SPACING.

- PROPRIETARY -
THIS DOCUMENT CONTAINS CONFIDENTIAL, PROPRIETARY INFORMATION THAT IS FOX PROPERTY. DO NOT DISCLOSE TO OR DUPLICATE FOR OTHERS EXCEPT AS AUTHORIZED BY FOX.

| | | | |
|---|-----------------------------------|---|-------------------------------------|
| | | FOX Factory, Inc. | Ph 831-768-1100 Fax 831-768-9312 |
| 130 Hangar Way, Watsonville, CA 95076 USA | | TITLE Valve Stack Assy: 2018 Float DPS, Linear Rebound Light, LRL | |
| SIZE C | DWG. NO. 805-05-303-KIT | PLOT SCALE 3.00:1 | |
| | | SHEET 1 OF 1 | |

4

3

2

1