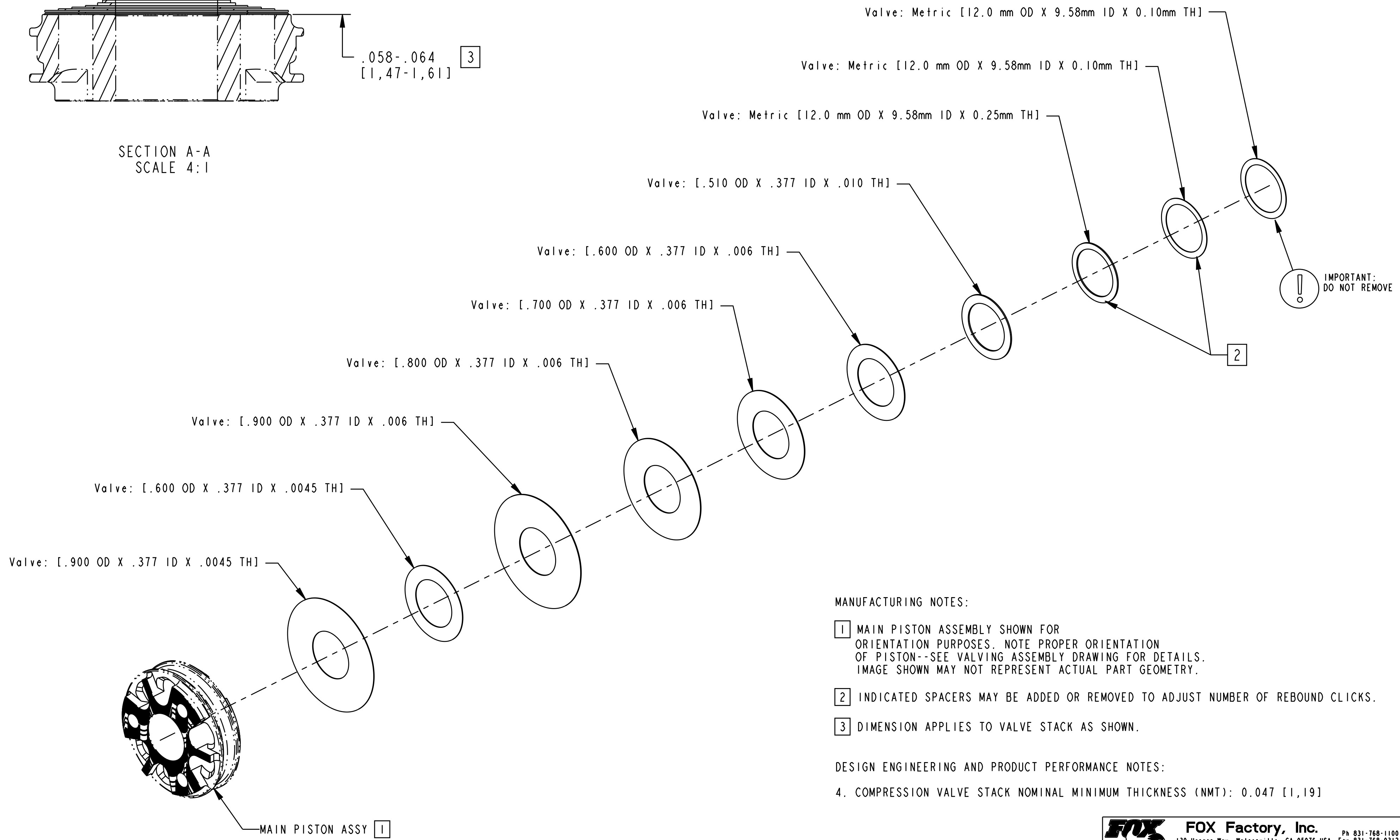
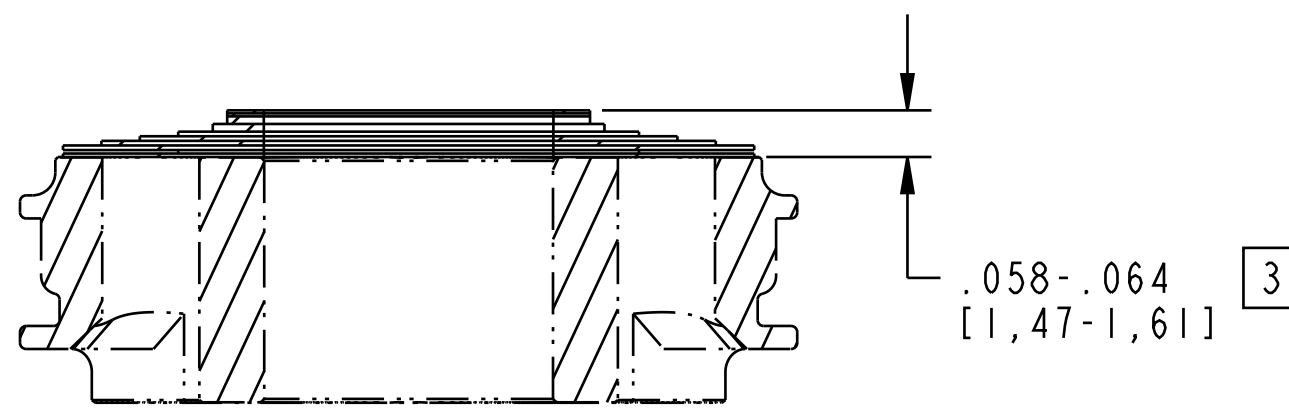


4

3

2

1



MANUFACTURING NOTES:

- [1] MAIN PISTON ASSEMBLY SHOWN FOR ORIENTATION PURPOSES. NOTE PROPER ORIENTATION OF PISTON--SEE VALVING ASSEMBLY DRAWING FOR DETAILS. IMAGE SHOWN MAY NOT REPRESENT ACTUAL PART GEOMETRY.
- [2] INDICATED SPACERS MAY BE ADDED OR REMOVED TO ADJUST NUMBER OF REBOUND CLICKS.
- [3] DIMENSION APPLIES TO VALVE STACK AS SHOWN.

DESIGN ENGINEERING AND PRODUCT PERFORMANCE NOTES:

4. COMPRESSION VALVE STACK NOMINAL MINIMUM THICKNESS (NMT): 0.047 [1,19]

- PROPRIETARY -
THIS DOCUMENT CONTAINS CONFIDENTIAL, PROPRIETARY INFORMATION
THAT IS FOX PROPERTY. DO NOT DISCLOSE TO OR DUPLICATE
FOR OTHERS EXCEPT AS AUTHORIZED BY FOX.

FOX		FOX Factory, Inc.		Ph 831-768-1100
		130 Hangar Way, Watsonville, CA 95076 USA		Fax 831-768-9312
TITLE				
Valve Stack Assy: 2025 FLOAT X & DHX, CS30, Comp Split Stack, FP, .047 NMT				
SIZE	DWG. NO.			
C	805-05-712-KIT			
PLOT SCALE		2:1	SHEET 1 OF 1	

4

3

2

1