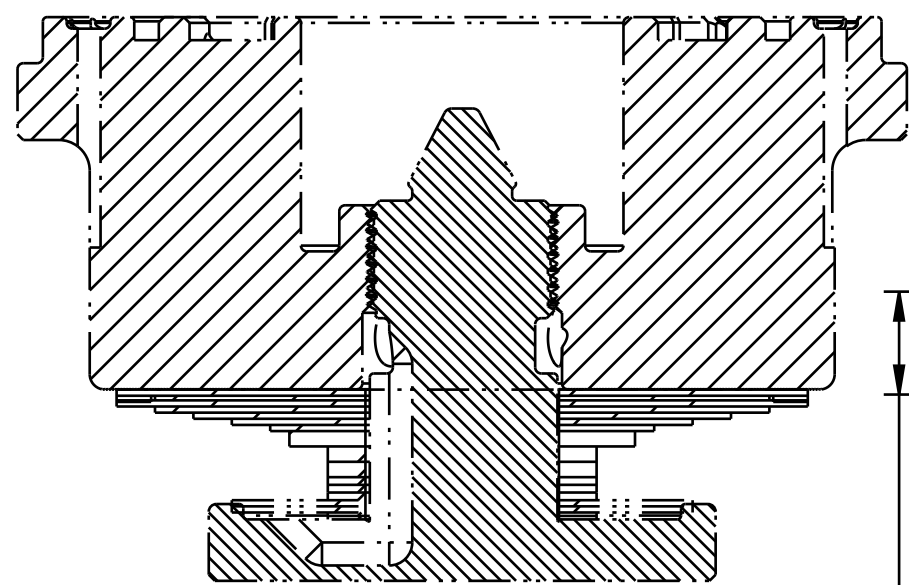


4

3

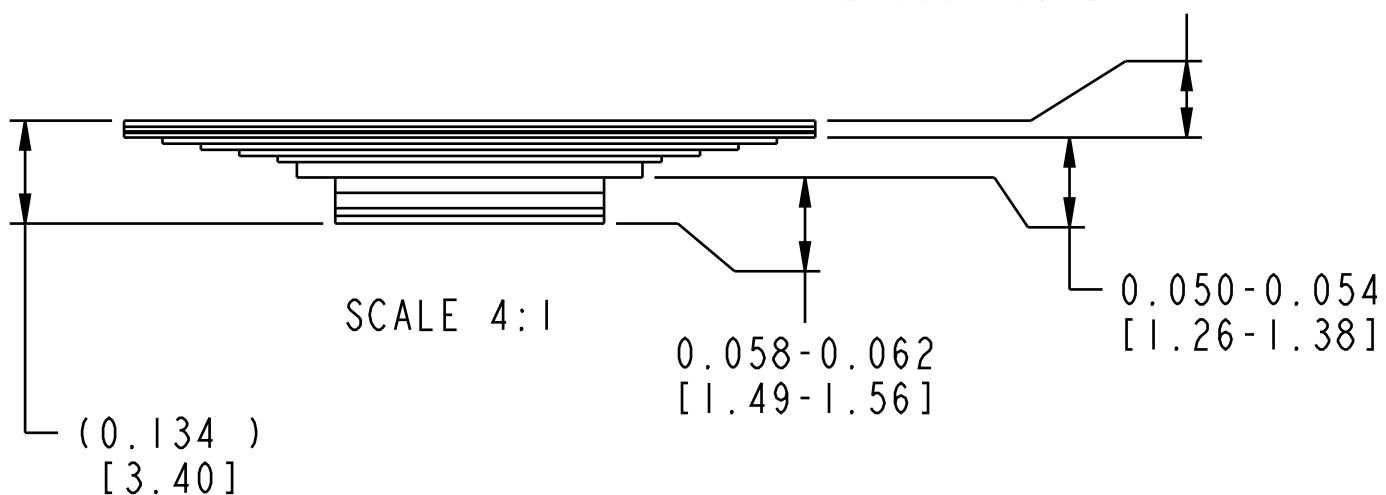
2

1



SECTION A-A  
SCALE 4:1

0.021-0.023 INSTALLED STACK HEIGHT [2]  
[0.54-0.58]  
0.023-0.025 FREE STACK HEIGHT [3]  
[0.58-0.64]



Valve: [.900 OD X 0.252 ID X 0.008 TH]

Valve: [.800 OD X .252 ID X .006 TH]

Valve: Ring Shim [.900 OD X .810 ID X .008 TH]

Valve: [.800 OD X .252 ID X .008 TH]

Valve: [.700 OD X .252 ID X .008 TH]

Valve: [.600 OD X .252 ID X .008 TH]

Valve: [.500 OD X 0.252 ID X 0.008 TH]

Valve: [0.450 OD X 0.252 ID X 0.020 TH]

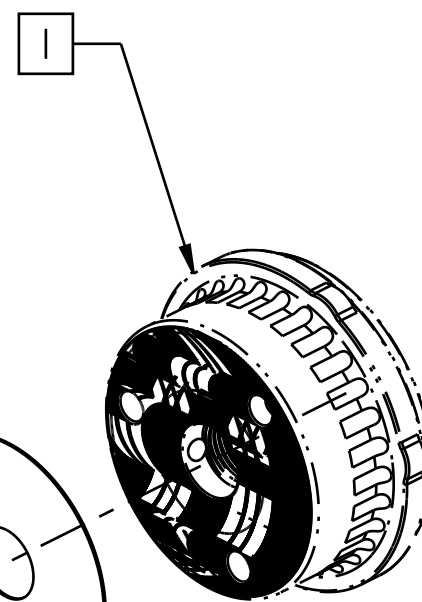
Valve: [.350 OD X .252 ID X .020 TH]

Valve: [.350 OD X .252 ID X 0.010 TH]

Valve: [.350 OD X .252 ID X .020 TH]

Valve: [.350 OD X .252 ID X 0.010 TH]

Valve: [.900 OD X 0.252 ID X 0.008 TH]



NOTES: UNLESS OTHERWISE SPECIFIED

- [1] BASE VALVE, BOLT AND LEVER MODE VALVE STACK ASSY SHOWN FOR REFERENCE PURPOSES.
- [2] FREE STATE REQUIRES MEASUREMENT WITH MINIMAL FORCE APPLIED FROM THE MEASUREMENT DEVICE. WHEN A RING SHIM IS PRESENT, THE MEASUREMENT DEVICE MUST SPAN BOTH SIDES OF THE RING SHIM.
- [3] INSTALLED STATE REQUIRES COMPRESSING THE VALVE STACK TO SOLID HEIGHT USING COMPRESSION INTERFACES THAT ARE NO LARGER IN DIAMETER THAN THE MINIMUM VALVE DIAMETER.

- PROPRIETARY -  
THIS DOCUMENT CONTAINS CONFIDENTIAL, PROPRIETARY INFORMATION  
THAT IS FOX PROPERTY. DO NOT DISCLOSE TO OR DUPLICATE  
FOR OTHERS EXCEPT AS AUTHORIZED BY FOX.

**FOX** FOX Factory, Inc. Ph 831-768-1100  
130 Hangar Way, Watsonville, CA 95076 USA Fax 831-768-9312

TITLE  
Valve Stack Assy: 2025 FLOAT X & DHX, B80,  
Base Valve Compression, Flat Piston

SIZE DWG. NO. **C** 805-05-241-KIT

PLOT SCALE 1.6:1 SHEET 1 OF 1

4

3

2

1