

4

3

2

1

Spring, Check, Comp, Grip

SEE DETAIL Y

Piston Damping Comp 20.0 Bore, Rail 2.0

Fastener, Custom (Metric): Nut M4 X .7

Bearing, External: Glide Ring, Molded, Rail 2.0

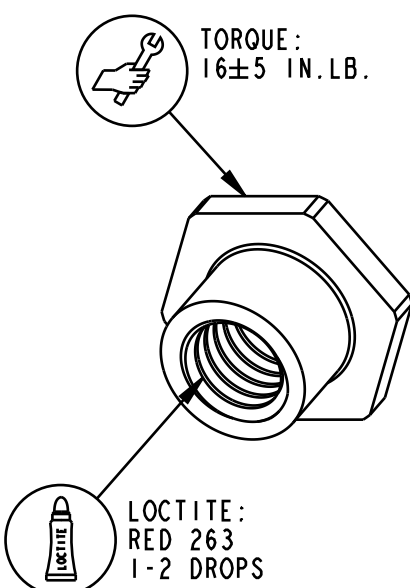
Valve: Metric [18.50mm OD X 5.55mm ID X 0.25mm THK] Custom, Check

820-03-759-KIT
2025 Rail 2.0 Compression Valving

GREASE:
THIN LAYER
OF SLICK HONEY

GREASE:
CLUMP LEVEL
OF BLUE ULTRAPLEX LT2 GREASE (025-01-027)

Seals: O-Ring [4.0mm ID x 1.5mm CS] Metric, N-70, Static



DETAIL Y
SCALE 4:1

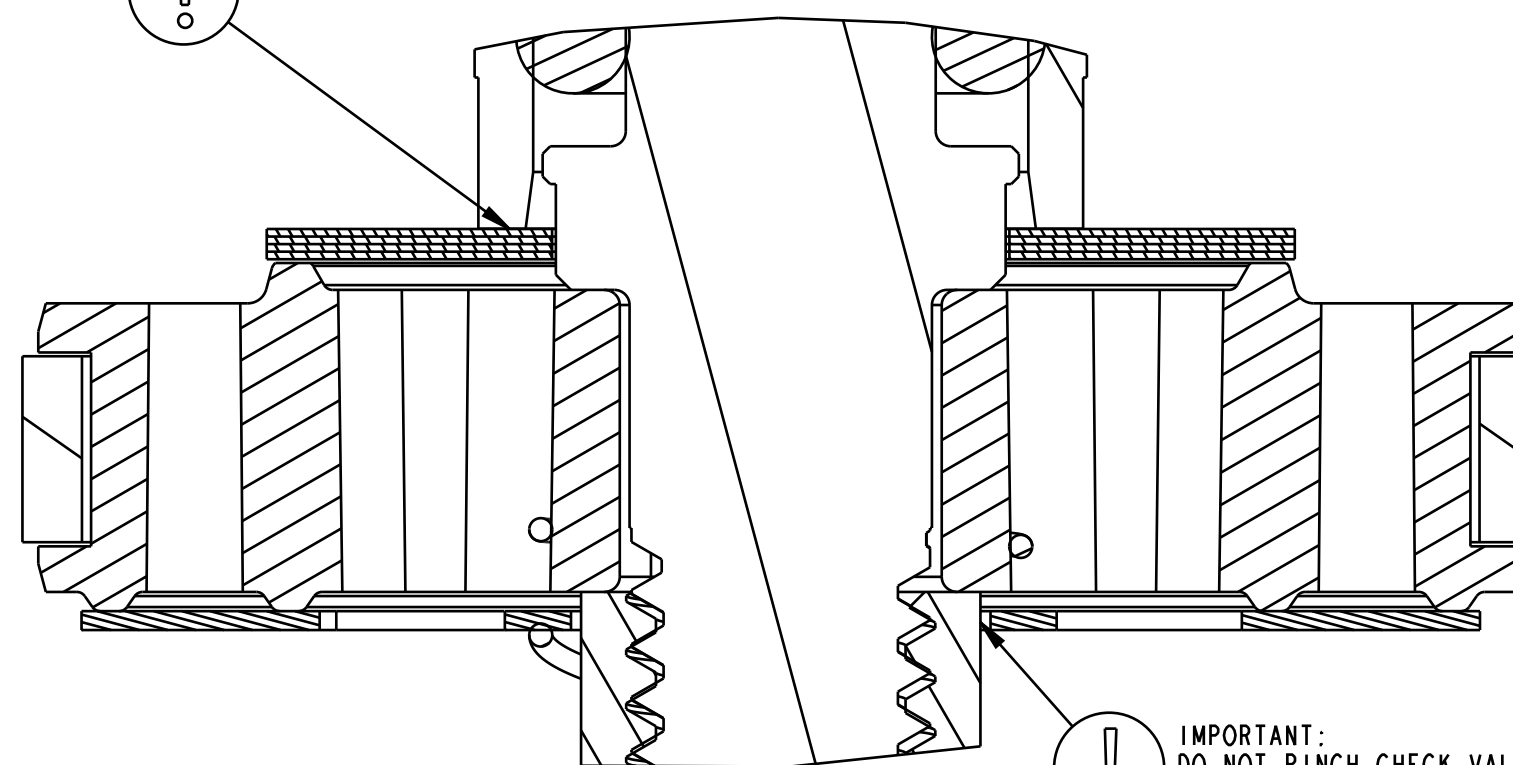
COMP NEEDLE

IMPORTANT:
DO NOT PINCH VALVES •

IMPORTANT:
ORIENTATION OF PISTON IS CRITICAL
ONE RAISED RING TOWARDS TOPCAP

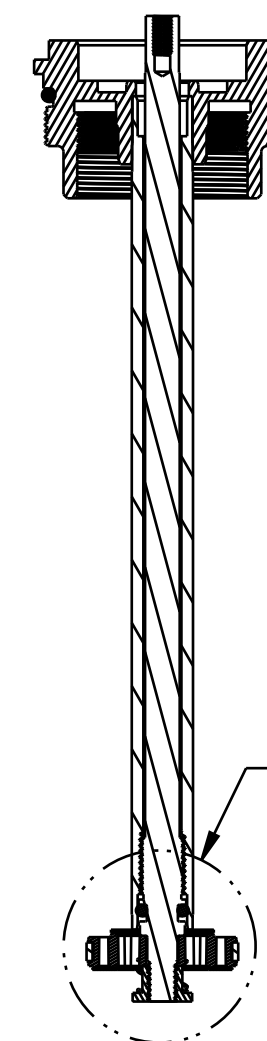
COMP SHAFT

GREASE:
THIN LAYER
OF SLICK HONEY



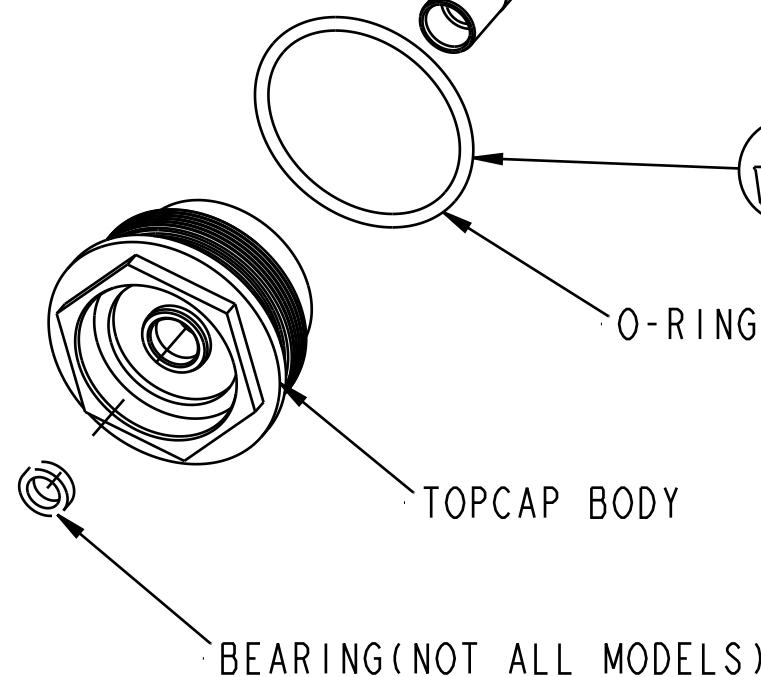
DETAIL Z
SCALE 10:1

IMPORTANT:
DO NOT PINCH CHECK VALVE •



SECTION A-A

SEE DETAIL Z



O-RING

TOPCAP BODY

BEARING (NOT ALL MODELS)

PROPRIETARY
THIS DOCUMENT CONTAINS CONFIDENTIAL, PROPRIETARY INFORMATION
THAT IS FOX PROPERTY. DO NOT DISCLOSE TO OR DUPLICATE
FOR OTHERS EXCEPT AS AUTHORIZED BY FOX.

FOX FOX Factory, Inc. Ph 831-768-1100
130 Hangar Way, Watsonville, CA 95076 USA Fax 831-768-9312

TITLE
2025 34 150, Rail 2.0
Damper, Topcap Assy

SIZE DWG. NO.
C 820-05-776-KIT

PLOT SCALE 1:1 SHEET 1 OF 1

ProE ASSEM

4

3

2

1