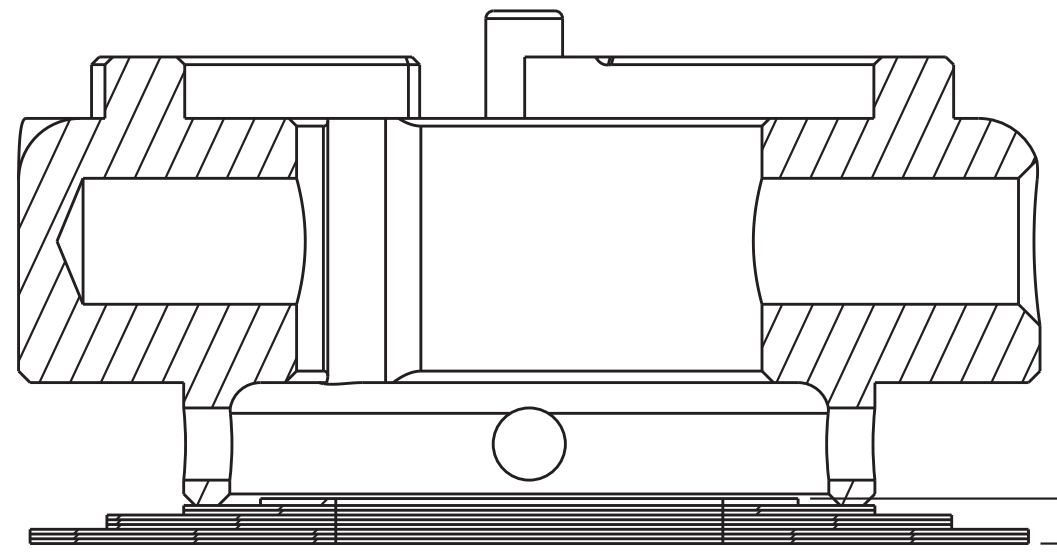


4

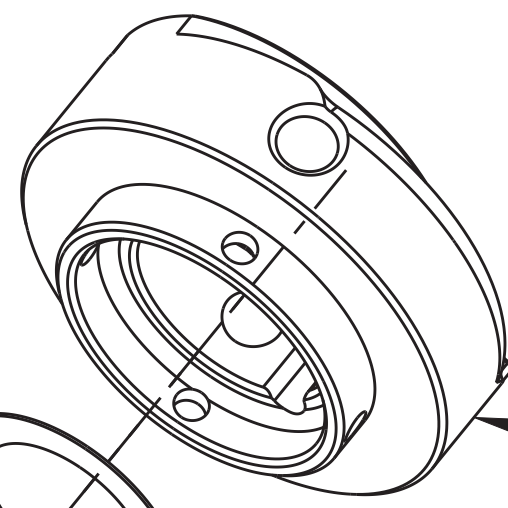
3

2

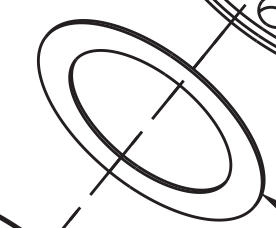
1



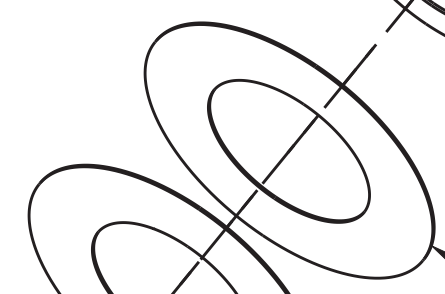
SECTION A-A
SCALE 8:1



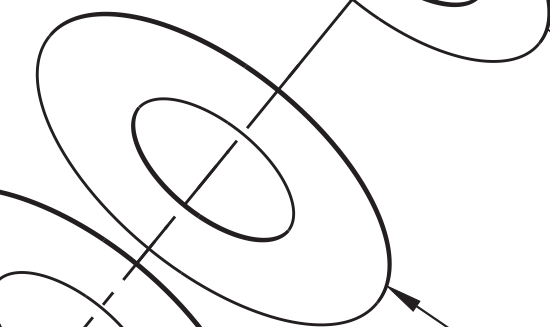
Plate, VVC, Rebound, GripX2, 0.450in Valve



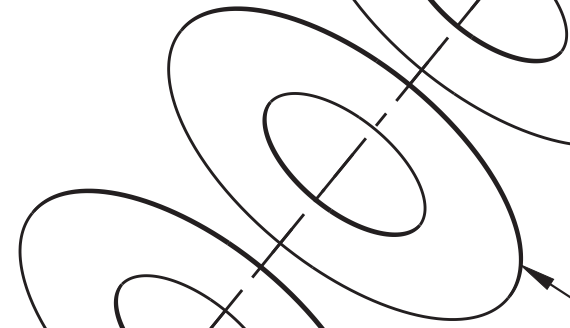
Valve:[0.350 OD x 0.252 ID x 0.0045 TH]



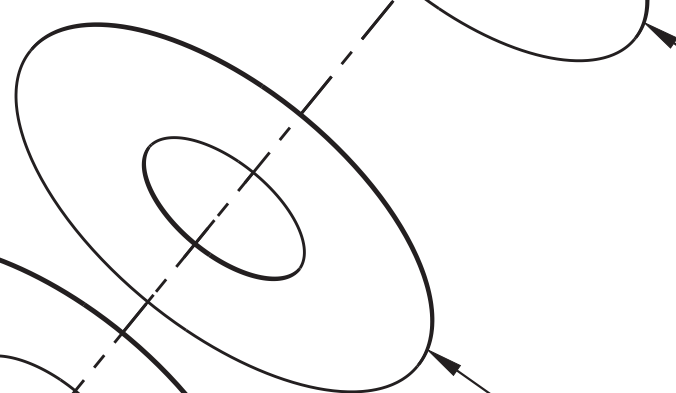
Valve:[0.450 OD x 0.252 ID x 0.0032 TH]



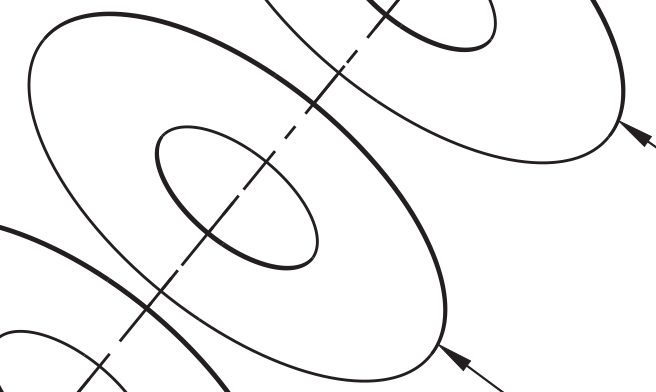
Valve:[0.450 OD x 0.252 ID x 0.0032 TH]



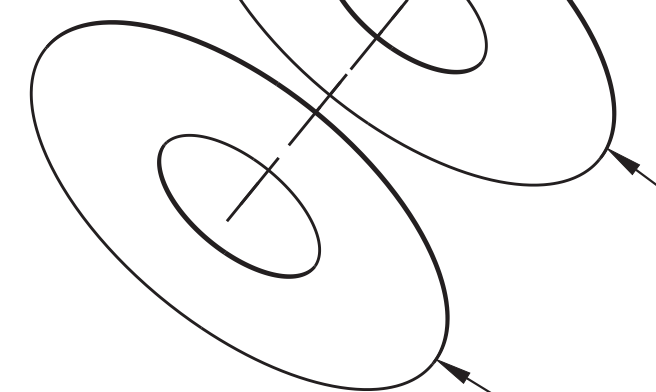
Valve:[0.550 OD x 0.252 ID x 0.0032 TH]



Valve:[0.550 OD x 0.252 ID x 0.0032 TH]



Valve:[0.550 OD x 0.252 ID x 0.0032 TH]



Valve:[0.650 OD x 0.252 ID x 0.0032 TH]

Valve:[0.650 OD x 0.252 ID x 0.0032 TH]

Valve:[0.650 OD x 0.252 ID x 0.0032 TH]

FOX FOX Factory, Inc. Ph 831-768-1100	
130 Hangar Way, Watsonville, CA 95076 USA Fax 831-768-9312	
TITLE Valve Stack Assy: 2025 Grip X2, Rebound Valving, LIGHT	
SIZE C	DWG. NO. 820-03-743-KIT
PLOT SCALE 4:1	SHEET 1 OF 1

- PROPRIETARY -
THIS DOCUMENT CONTAINS CONFIDENTIAL, PROPRIETARY INFORMATION
THAT IS FOX PROPERTY. DO NOT DISCLOSE TO OR DUPLICATE
FOR OTHERS EXCEPT AS AUTHORIZED BY FOX.

4

3

2

ProE ASSEM