

4

3

2

1

Fastener Standard (Metric): Screw, Socket Head, M2.5 X 8

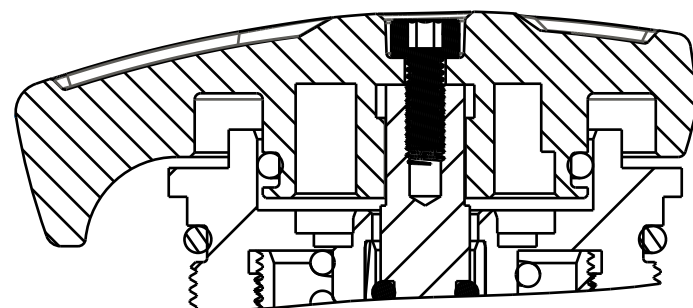
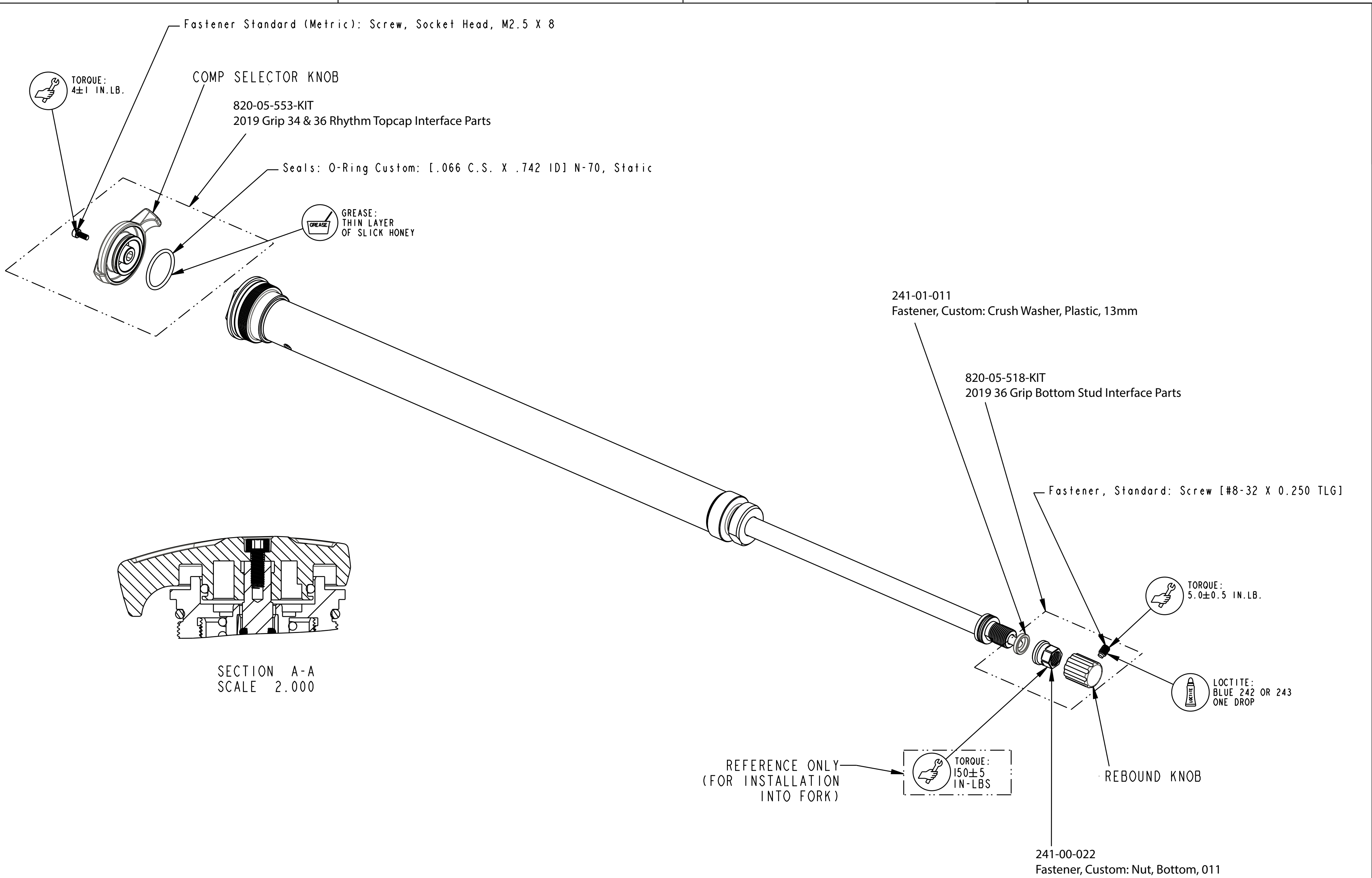
TORQUE:
4±1 IN.LB.

COMP SELECTOR KNOB

820-05-553-KIT
2019 Grip 34 & 36 Rhythm Topcap Interface Parts

Seals: O-Ring Custom: [1.066 C.S. X .742 ID] N-70, Static

GREASE:
THIN LAYER
OF SLICK HONEY



SECTION A-A
SCALE 2.000

241-01-011
Fastener, Custom: Crush Washer, Plastic, 13mm

820-05-518-KIT
2019 36 Grip Bottom Stud Interface Parts

Fastener, Standard: Screw [#8-32 X 0.250 TLG]

TORQUE:
5.0±0.5 IN.LB.

LOCTITE:
BLUE 242 OR 243
ONE DROP

REFERENCE ONLY
(FOR INSTALLATION
INTO FORK)

TORQUE:
150±5
IN-LBS

REBOUND KNOB

241-00-022
Fastener, Custom: Nut, Bottom, 011

FOX FOX Factory, Inc. Ph 831-768-1100
130 Hangar Way, Watsonville, CA 95076 USA Fax 831-768-9312

TITLE
2019 36 Rhythm, 180 MAX,
Grip E-Bike Cart Assy Complete

SIZE DWG. NO.
C 820-18-139-KIT

PLOT SCALE 0.75:1 SHEET 1 OF 2

PROPRIETARY
THIS DOCUMENT CONTAINS CONFIDENTIAL, PROPRIETARY INFORMATION
THAT IS FOX PROPERTY. DO NOT DISCLOSE TO OR DUPLICATE
FOR OTHERS EXCEPT AS AUTHORIZED BY FOX.

4

3

2

1