

4

3

2

1

LOCTITE:
RED 263, 1 DROP
APPLY PER 605-14-175

(241-02-106)

DETAIL B
SCALE 2:1

Fastener, Standard (Metric), Nut, M6 x .75
Spring: [0.200 TLG X .400 ID X 0.50 lbs/in] Stainless Steel
Valve: Metric [8.00mm OD X 5.55mm ID X 0.25mm THK] Custom, Check
O-Ring [17mm ID X 1.5mm CS], N-90, Static

TORQUE:
16 ± 1 IN-LB

GREASE:
THIN LAYER
OF SLICK HONEY

Seals: O-Ring [8mm ID X 1.5mm CS] Metric, N-70, Static

Damping Adj Part: Hat Preload Comp

Seals: O-Ring [16.0mm ID X 2.0mm CS] Metric, N-70, Dynamic

O-Ring (-011) [.070 C.S. X .301 ID]

Bearing: External, [.13 W X .128 ID X .030 TH], PA6

Seals: O-Ring [4.0mm ID x 1.5mm CS] Metric, N-70, Static

Bearing: External, Slit [.13 W X .244 OD X .030 TH], PA6

GREASE:
THIN LAYER
OF SLICK HONEY

IMPORTANT:
NOTE ORIENTATION.
THIS END TAPERED

Sleeve: Isolator, Spring, ID, Grip

Fastener Standard (Metric): PIN SS 2 X 12

Shaft, Damper, Comp, 8mm, 2020 Grip Remote, 32, 34

Seals: O-Ring [(-024) .070 C.S. X 1.114 ID] Standard, N-70, Static

Damping Adj Part: Topcap, 34, 2020 GRIP Remote, Black Ano

SEE DETAIL B

2020 Grip Remote Compression Valving

Fastener, Custom: Bolt Piston Comp Grip

Piston Floating: IFP, Grip

Sleeve: Isolator, Spring, OD, Grip

Damping Adj Part: Needle, Comp, Grip Remote, Bushings, 32, 34

Spring, Piston, Floating, Grip 160

Sleeve: Isolator, Spring, ID, Grip

Fastener Standard (Metric): PIN SS 2 X 12

Shaft, Damper, Comp, 8mm, 2020 Grip Remote, 32, 34

Seals: O-Ring [(-024) .070 C.S. X 1.114 ID] Standard, N-70, Static

Damping Adj Part: Topcap, 34, 2020 GRIP Remote, Black Ano

019-02-025

039-00-349

045-00-151

029-08-188

029-08-084

210-22-957

029-08-196

029-03-011

002-02-089

029-08-108

002-02-091

223-00-049

231-00-026

210-03-301

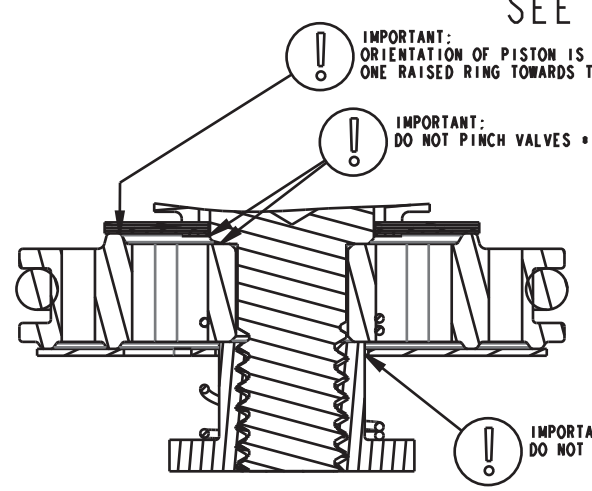
039-00-378

231-00-025

019-01-116

229-10-781

029-03-024-A



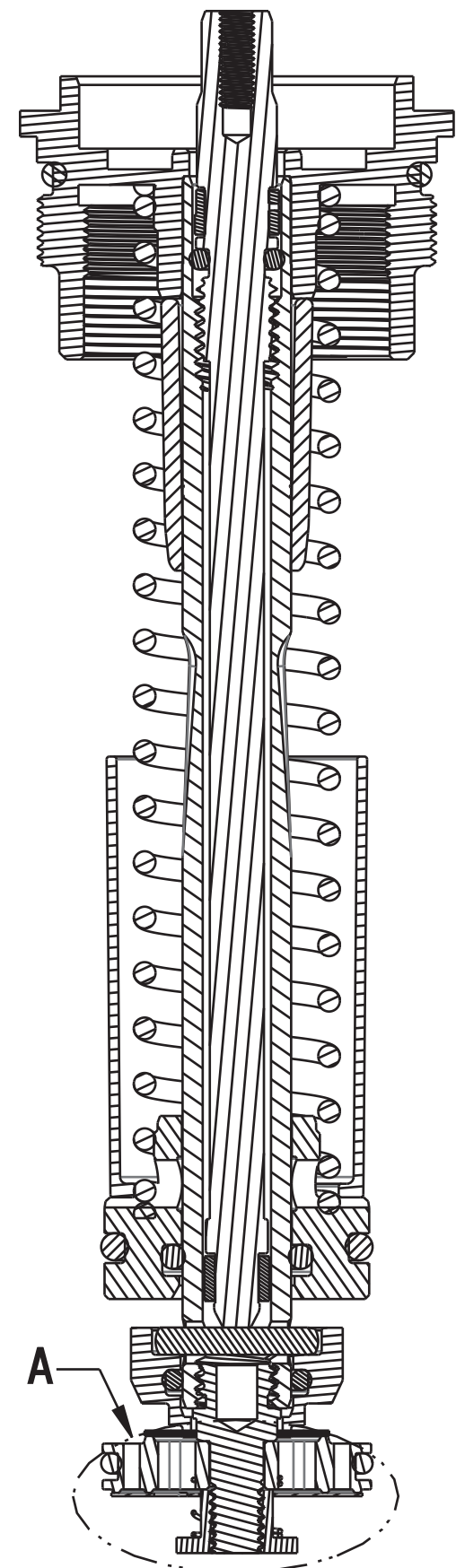
DETAIL A
SCALE 6:1

SEE DETAIL A

IMPORTANT:
ORIENTATION OF PISTON IS CRITICAL
ONE RAISED RING TOWARDS TOPCAP

IMPORTANT:
DO NOT PINCH VALVES

IMPORTANT:
DO NOT PINCH CHECK VALVE



SECTION A-A
SCALE 2:1

PROPRIETARY
THIS DOCUMENT CONTAINS CONFIDENTIAL, PROPRIETARY INFORMATION
THAT IS FOX PROPERTY. DO NOT DISCLOSE TO OR DUPLICATE
FOR OTHERS EXCEPT AS AUTHORIZED BY FOX.

FOX Factory, Inc. Ph 831-768-1100
130 Hangar Way, Watsonville, CA 95076 USA Fax 831-768-9312

TITLE
**2020 34, All,
Grip Remote, Topcap Assy**

SIZE DWG. NO. **820-05-606-KIT**

PLOT SCALE 1:1 SHEET 1 OF 1